

Cytochrome P450 Reductase Antibody
Rabbit mAb
Catalog # AP91775**Specification**

Cytochrome P450 Reductase Antibody - Product Information

Application	WB, IHC, FC, ICC
Primary Accession	P16435
Reactivity	Rat
Clonality	Monoclonal
Other Names	
CPR; CYPOR; P450R; por;	
Isotype	Rabbit IgG
Host	Rabbit
Calculated MW	76690 Da

Cytochrome P450 Reductase Antibody - Additional Information

Purification	Affinity-chromatography
Immunogen	A synthesized peptide derived from human Cytochrome P450 Reductase
Description	This enzyme is required for electron transfer from NADP to cytochrome P450 in microsomes. It can also provide electron transfer to heme oxygenase and cytochrome B5.
Storage Condition and Buffer	Rabbit IgG in phosphate buffered saline , pH 7.4, 150mM NaCl, 0.02% sodium azide and 50% glycerol. Store at +4°C short term. Store at -20°C long term. Avoid freeze / thaw cycle.

Cytochrome P450 Reductase Antibody - Protein Information**Name** POR {ECO:0000255|HAMAP-Rule:MF_03212}**Synonyms** CYPOR**Function**

This enzyme is required for electron transfer from NADP to cytochrome P450 in microsomes. It can also provide electron transfer to heme oxygenase and cytochrome B5.

Cellular Location

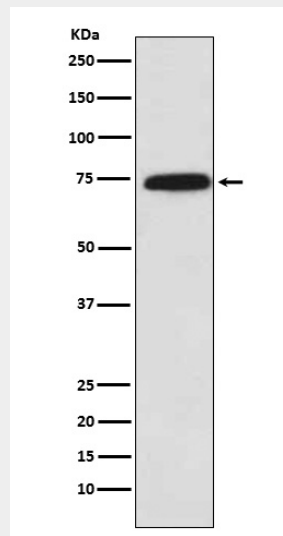
Endoplasmic reticulum membrane {ECO:0000255|HAMAP-Rule:MF_03212}; Single-pass membrane protein {ECO:0000255|HAMAP-Rule:MF_03212}; Cytoplasmic side {ECO:0000255|HAMAP-Rule:MF_03212}

Cytochrome P450 Reductase Antibody - Protocols

Provided below are standard protocols that you may find useful for product applications.

- [Western Blot](#)
- [Blocking Peptides](#)
- [Dot Blot](#)
- [Immunohistochemistry](#)
- [Immunofluorescence](#)
- [Immunoprecipitation](#)
- [Flow Cytometry](#)
- [Cell Culture](#)

Cytochrome P450 Reductase Antibody - Images



Western blot analysis of Cytochrome P450 Reductase expression in A431 cell lysate.