

PHOX2B Antibody
Rabbit mAb
Catalog # AP91774

Specification

PHOX2B Antibody - Product Information

Application	WB, IHC, ICC
Primary Accession	O99453
Clonality	Monoclonal
Other Names	
NBLST2; NBPhox; PHOX 2B; PHOX2B; PMX 2B; PMX2B;	
Isotype	Rabbit IgG
Host	Rabbit
Calculated MW	31621 Da

PHOX2B Antibody - Additional Information

Purification	Affinity-chromatography
Immunogen	A synthesized peptide derived from human PHOX2B
Description	Involved in the development of several major noradrenergic neuron populations, including the locus coeruleus. Transcription factor which could determine a neurotransmitter phenotype in vertebrates. Enhances second-messenger-mediated activation of the dopamine beta-hydrolase and c-fos promoters, and of several enhancers including cAMP-response element and serum-response element.
Storage Condition and Buffer	Rabbit IgG in phosphate buffered saline , pH 7.4, 150mM NaCl, 0.02% sodium azide and 50% glycerol. Store at +4°C short term. Store at -20°C long term. Avoid freeze / thaw cycle.

PHOX2B Antibody - Protein Information

Name PHOX2B

Synonyms PMX2B

Function

Involved in the development of several major noradrenergic neuron populations, including the locus coeruleus. Transcription factor which could determine a neurotransmitter phenotype in vertebrates. Enhances second-messenger-mediated activation of the dopamine beta- hydrolase and c-fos promoters, and of several enhancers including cAMP- response element and

serum-response element.

Cellular Location

Nucleus {ECO:0000255|PROSITE-ProRule:PRU00108}.

Tissue Location

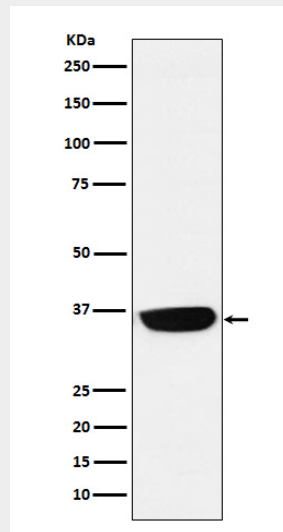
Expressed in neuroblastoma, brain and adrenal gland

PHOX2B Antibody - Protocols

Provided below are standard protocols that you may find useful for product applications.

- [Western Blot](#)
- [Blocking Peptides](#)
- [Dot Blot](#)
- [Immunohistochemistry](#)
- [Immunofluorescence](#)
- [Immunoprecipitation](#)
- [Flow Cytometry](#)
- [Cell Culture](#)

PHOX2B Antibody - Images



Western blot analysis of PHOX2B expression in Neuro-2a cell lysate.