

**E1 Ubiquitin Activating Enzyme Antibody**  
Rabbit mAb  
Catalog # AP91770**Specification****E1 Ubiquitin Activating Enzyme Antibody - Product Information**

Application	WB, IHC, FC, ICC
Primary Accession	<a href="#">P22314</a>
Reactivity	Rat
Clonality	Monoclonal
<b>Other Names</b>	
A1S9; A1S9T; A1ST; AMCX1; CFAP124; GXP1; POC20; SMAX2; Uba1; UBA1A; UBE1; UBE1X;	
Isotype	Rabbit IgG
Host	Rabbit
Calculated MW	117849 Da

**E1 Ubiquitin Activating Enzyme Antibody - Additional Information**

Purification	Affinity-chromatography
Immunogen	A synthesized peptide derived from human E1 Ubiquitin Activating Enzyme
Description	Activates ubiquitin by first adenylating its C-terminal glycine residue with ATP, and thereafter linking this residue to the side chain of a cysteine residue in E1, yielding an ubiquitin-E1 thioester and free AMP.
Storage Condition and Buffer	Rabbit IgG in phosphate buffered saline , pH 7.4, 150mM NaCl, 0.02% sodium azide and 50% glycerol. Store at +4°C short term. Store at -20°C long term. Avoid freeze / thaw cycle.

**E1 Ubiquitin Activating Enzyme Antibody - Protein Information****Name** UBA1**Synonyms** A1S9T, UBE1**Function**

Catalyzes the first step in ubiquitin conjugation to mark cellular proteins for degradation through the ubiquitin-proteasome system (PubMed: [1447181](http://www.uniprot.org/citations/1447181), PubMed: [1606621](http://www.uniprot.org/citations/1606621), PubMed: [33108101](http://www.uniprot.org/citations/33108101)). Activates ubiquitin by first adenylating its C-terminal glycine residue with ATP, and thereafter linking this residue to the side chain of a cysteine residue in E1, yielding a ubiquitin-E1 thioester and free AMP (PubMed: [1447181](http://www.uniprot.org/citations/1447181)). Essential for the formation of radiation-induced foci, timely DNA repair and for response to replication stress.

Promotes the recruitment of TP53BP1 and BRCA1 at DNA damage sites (PubMed:<a href="http://www.uniprot.org/citations/22456334" target="\_blank">22456334</a>).

#### Cellular Location

Cytoplasm. Mitochondrion. Nucleus [Isoform 2]: Cytoplasm

#### Tissue Location

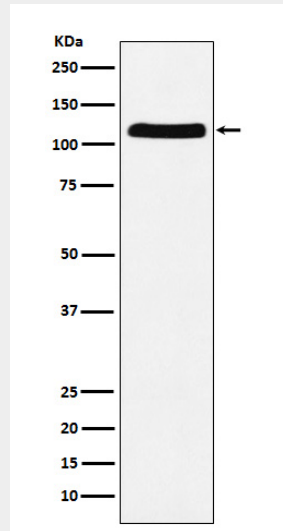
Detected in erythrocytes (at protein level). Ubiquitous.

### E1 Ubiquitin Activating Enzyme Antibody - Protocols

Provided below are standard protocols that you may find useful for product applications.

- [Western Blot](#)
- [Blocking Peptides](#)
- [Dot Blot](#)
- [Immunohistochemistry](#)
- [Immunofluorescence](#)
- [Immunoprecipitation](#)
- [Flow Cytometry](#)
- [Cell Culture](#)

### E1 Ubiquitin Activating Enzyme Antibody - Images



Western blot analysis of E1 Ubiquitin Activating Enzyme expression in HeLa cell lysate.