

**eIF2B epsilon Antibody**  
Rabbit mAb  
Catalog # AP91756

## Specification

---

### eIF2B epsilon Antibody - Product Information

Application **WB, IHC, ICC**  
Primary Accession [O13144](#)  
Clonality **Monoclonal**  
**Other Names**  
CACH; CLE; EIF 2B; EIF2B; EIF2B5; EIF2BE; EIF2Bepsilon;

Isotype **Rabbit IgG**  
Host **Rabbit**  
Calculated MW **80380 Da**

### eIF2B epsilon Antibody - Additional Information

Purification **Affinity-chromatography**  
Immunogen **A synthesized peptide derived from human eIF2B epsilon**  
Description **Catalyzes the exchange of eukaryotic initiation factor 2-bound GDP for GTP.**  
Storage Condition and Buffer **Rabbit IgG in phosphate buffered saline , pH 7.4, 150mM NaCl, 0.02% sodium azide and 50% glycerol. Store at +4°C short term. Store at -20°C long term. Avoid freeze / thaw cycle.**

### eIF2B epsilon Antibody - Protein Information

**Name** EIF2B5

**Synonyms** EIF2BE

#### Function

Acts as a component of the translation initiation factor 2B (eIF2B) complex, which catalyzes the exchange of GDP for GTP on eukaryotic initiation factor 2 (eIF2) gamma subunit (PubMed:<a href="http://www.uniprot.org/citations/25858979" target="\_blank">25858979</a>, PubMed:<a href="http://www.uniprot.org/citations/27023709" target="\_blank">27023709</a>, PubMed:<a href="http://www.uniprot.org/citations/31048492" target="\_blank">31048492</a>). Its guanine nucleotide exchange factor activity is repressed when bound to eIF2 complex phosphorylated on the alpha subunit, thereby limiting the amount of methionyl- initiator methionine tRNA available to the ribosome and consequently global translation is repressed (PubMed:<a href="http://www.uniprot.org/citations/25858979" target="\_blank">25858979</a>, PubMed:<a href="http://www.uniprot.org/citations/31048492" target="\_blank">31048492</a>).

#### Cellular Location

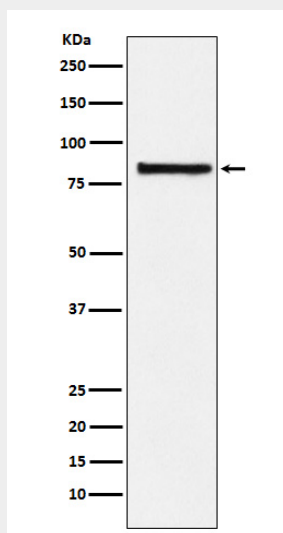
Cytoplasm, cytosol {ECO:0000250|UniProtKB:P56287}

## eIF2B epsilon Antibody - Protocols

Provided below are standard protocols that you may find useful for product applications.

- [Western Blot](#)
- [Blocking Peptides](#)
- [Dot Blot](#)
- [Immunohistochemistry](#)
- [Immunofluorescence](#)
- [Immunoprecipitation](#)
- [Flow Cytometry](#)
- [Cell Culture](#)

## eIF2B epsilon Antibody - Images



Western blot analysis of eIF2B epsilon expression in HeLa cell lysate.