

Mast Cell Chymase Antibody
Rabbit mAb
Catalog # AP91748

Specification

Mast Cell Chymase Antibody - Product Information

Application	WB, IHC
Primary Accession	P23946
Clonality	Monoclonal
Other Names	
Chymase 1; Chymase; CMA1; CYH; CYM; Mcp-5; MCP3P; Mcpt5; MCT1; MMCP-5;	
Isotype	Rabbit IgG
Host	Rabbit
Calculated MW	27325 Da

Mast Cell Chymase Antibody - Additional Information

Purification	Affinity-chromatography
Immunogen	A synthesized peptide derived from human Mast Cell Chymase
Description	Major secreted protease of mast cells with suspected roles in vasoactive peptide generation, extracellular matrix degradation, and regulation of gland secretion.
Storage Condition and Buffer	Rabbit IgG in phosphate buffered saline , pH 7.4, 150mM NaCl, 0.02% sodium azide and 50% glycerol. Store at +4°C short term. Store at -20°C long term. Avoid freeze / thaw cycle.

Mast Cell Chymase Antibody - Protein Information

Name CMA1

Synonyms CYH, CYM

Function

Major secreted protease of mast cells with suspected roles in vasoactive peptide generation, extracellular matrix degradation, and regulation of gland secretion.

Cellular Location

Secreted. Cytoplasmic granule. Note=Mast cell granules

Tissue Location

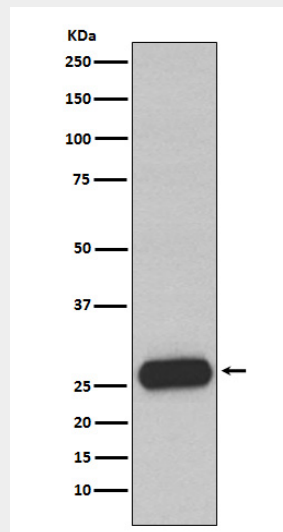
Mast cells in lung, heart, skin and placenta. Expressed in both normal skin and in urticaria pigmentosa lesions

Mast Cell Chymase Antibody - Protocols

Provided below are standard protocols that you may find useful for product applications.

- [Western Blot](#)
- [Blocking Peptides](#)
- [Dot Blot](#)
- [Immunohistochemistry](#)
- [Immunofluorescence](#)
- [Immunoprecipitation](#)
- [Flow Cytometry](#)
- [Cell Culture](#)

Mast Cell Chymase Antibody - Images



Western blot analysis of Mast Cell Chymase expression in Human small intestine lysate.