

ALDH1L1 Antibody
Rabbit mAb
Catalog # AP91739

Specification

ALDH1L1 Antibody - Product Information

Application	WB
Primary Accession	O75891
Reactivity	Rat
Clonality	Monoclonal
Other Names	
10 FTHFDH; aldh1l1; FDH; FTHFD;	
Isotype	Rabbit IgG
Host	Rabbit
Calculated MW	98829 Da

ALDH1L1 Antibody - Additional Information

Purification	Affinity-chromatography
Immunogen	A synthesized peptide derived from human ALDH1L1
Description	Highly expressed in liver, pancreas and kidney.
Storage Condition and Buffer	Rabbit IgG in phosphate buffered saline , pH 7.4, 150mM NaCl, 0.02% sodium azide and 50% glycerol. Store at +4°C short term. Store at -20°C long term. Avoid freeze / thaw cycle.

ALDH1L1 Antibody - Protein Information

Name ALDH1L1 ([HGNC:3978](#))

Synonyms FTHFD

Function

Cytosolic 10-formyltetrahydrofolate dehydrogenase that catalyzes the NADP(+)-dependent conversion of 10-formyltetrahydrofolate to tetrahydrofolate and carbon dioxide (PubMed:19933275, PubMed:21238436). May also have an NADP(+)-dependent aldehyde dehydrogenase activity towards formaldehyde, acetaldehyde, propionaldehyde, and benzaldehyde (By similarity).

Cellular Location

Cytoplasm, cytosol.

Tissue Location

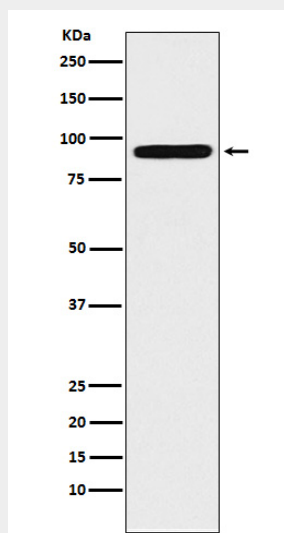
Highly expressed in liver, pancreas and kidney.

ALDH1L1 Antibody - Protocols

Provided below are standard protocols that you may find useful for product applications.

- [Western Blot](#)
- [Blocking Peptides](#)
- [Dot Blot](#)
- [Immunohistochemistry](#)
- [Immunofluorescence](#)
- [Immunoprecipitation](#)
- [Flow Cytometry](#)
- [Cell Culture](#)

ALDH1L1 Antibody - Images



Western blot analysis of ALDH1L1 expression in 293T cell lysate.