

NCX1 Antibody
Rabbit mAb
Catalog # AP91738

Specification

NCX1 Antibody - Product Information

| | |
|--|------------------------|
| Application | WB |
| Primary Accession | P32418 |
| Reactivity | Rat |
| Clonality | Monoclonal |
| Other Names | |
| Na ⁺ /Ca ²⁺ exchanger; NCX1; SLC8A1; | |
| Isotype | Rabbit IgG |
| Host | Rabbit |
| Calculated MW | 108547 Da |

NCX1 Antibody - Additional Information

| | |
|------------------------------|---|
| Purification | Affinity-chromatography |
| Immunogen | A synthesized peptide derived from human NCX1 |
| Description | Rapidly transports Ca(2+) during excitation-contraction coupling. Ca(2+) is extruded from the cell during relaxation so as to prevent overloading of intracellular stores. |
| Storage Condition and Buffer | Rabbit IgG in phosphate buffered saline , pH 7.4, 150mM NaCl, 0.02% sodium azide and 50% glycerol. Store at +4°C short term. Store at -20°C long term. Avoid freeze / thaw cycle. |

NCX1 Antibody - Protein Information

Name SLC8A1

Function

Mediates the exchange of one Ca(2+) ion against three to four Na(+) ions across the cell membrane, and thereby contributes to the regulation of cytoplasmic Ca(2+) levels and Ca(2+)-dependent cellular processes (PubMed:[11241183](http://www.uniprot.org/citations/11241183), PubMed:[1374913](http://www.uniprot.org/citations/1374913), PubMed:[1476165](http://www.uniprot.org/citations/1476165)). Contributes to Ca(2+) transport during excitation-contraction coupling in muscle (PubMed:[11241183](http://www.uniprot.org/citations/11241183), PubMed:[1374913](http://www.uniprot.org/citations/1374913), PubMed:[1476165](http://www.uniprot.org/citations/1476165)). In a first phase, voltage-gated channels mediate the rapid increase of cytoplasmic Ca(2+) levels due to release of

Ca(2+) stores from the endoplasmic reticulum (PubMed:11241183, PubMed:1374913, PubMed:1476165). SLC8A1 mediates the export of Ca(2+) from the cell during the next phase, so that cytoplasmic Ca(2+) levels rapidly return to baseline (PubMed:11241183, PubMed:1374913, PubMed:1476165). Required for normal embryonic heart development and the onset of heart contractions (By similarity).

Cellular Location

Cell membrane; Multi-pass membrane protein

Tissue Location

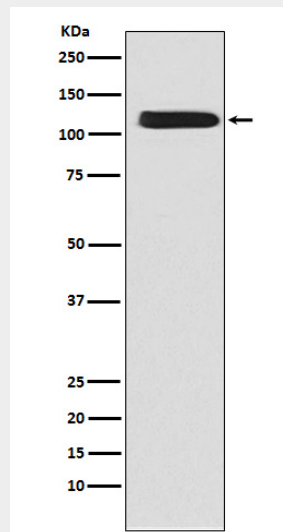
Detected primarily in heart and at lower levels in brain (PubMed:1374913). Expressed in cardiac sarcolemma, brain, kidney, liver, pancreas, skeletal muscle, placenta and lung (PubMed:1476165)

NCX1 Antibody - Protocols

Provided below are standard protocols that you may find useful for product applications.

- [Western Blot](#)
- [Blocking Peptides](#)
- [Dot Blot](#)
- [Immunohistochemistry](#)
- [Immunofluorescence](#)
- [Immunoprecipitation](#)
- [Flow Cytometry](#)
- [Cell Culture](#)

NCX1 Antibody - Images



Western blot analysis of NCX1 expression in K562 cell lysate.