

NPRC Antibody
Rabbit mAb
Catalog # AP91735

Specification

NPRC Antibody - Product Information

Application	WB, FC
Primary Accession	P17342
Reactivity	Rat
Clonality	Monoclonal
Other Names	
ANPC; ANPRC; GUCY2B; NPR 3; NPR C; Npr3; NPRC;	
Isotype	Rabbit IgG
Host	Rabbit
Calculated MW	59808 Da

NPRC Antibody - Additional Information

Purification	Affinity-chromatography
Immunogen	A synthesized peptide derived from human Natriuretic Peptide Receptor C
Description	Receptor for the natriuretic peptide hormones, binding with similar affinities atrial natriuretic peptide NPPA/ANP, brain natriuretic peptide NPPB/BNP, and C-type natriuretic peptide NPPC/CNP.
Storage Condition and Buffer	Rabbit IgG in phosphate buffered saline , pH 7.4, 150mM NaCl, 0.02% sodium azide and 50% glycerol. Store at +4°C short term. Store at -20°C long term. Avoid freeze / thaw cycle.

NPRC Antibody - Protein Information

Name NPR3

Synonyms ANPRC, C5orf23, NPRC

Function

Receptor for the natriuretic peptide hormones, binding with similar affinities atrial natriuretic peptide NPPA/ANP, brain natriuretic peptide NPPB/BNP, and C-type natriuretic peptide NPPC/CNP. May function as a clearance receptor for NPPA, NPPB and NPPC, regulating their local concentrations and effects. May regulate diuresis, blood pressure and skeletal development. Does not have guanylate cyclase activity.

Cellular Location

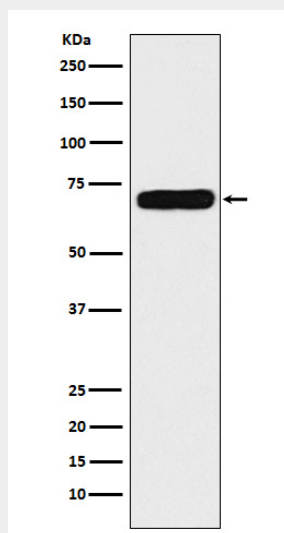
Cell membrane; Single-pass type I membrane protein

NPRC Antibody - Protocols

Provided below are standard protocols that you may find useful for product applications.

- [Western Blot](#)
- [Blocking Peptides](#)
- [Dot Blot](#)
- [Immunohistochemistry](#)
- [Immunofluorescence](#)
- [Immunoprecipitation](#)
- [Flow Cytometry](#)
- [Cell Culture](#)

NPRC Antibody - Images



Western blot analysis of Natriuretic Peptide Receptor C expression in HeLa cell lysate.