

**PAR6 Antibody**  
Rabbit mAb  
Catalog # AP91727

## Specification

---

### PAR6 Antibody - Product Information

Application	WB, IP
Primary Accession	<a href="#">O9NPB6</a>
Reactivity	Rat
Clonality	Monoclonal
<b>Other Names</b>	
PAR6; PAR6C; TAX40; PAR-6A; TIP-40; PAR6alpha;	
Isotype	Rabbit IgG
Host	Rabbit
Calculated MW	37388 Da

### PAR6 Antibody - Additional Information

Purification	Affinity-chromatography
Immunogen	A synthesized peptide derived from human PAR6
Description	Adapter protein involved in asymmetrical cell division and cell polarization processes. Probably involved in the formation of epithelial tight junctions. Association with PARD3 may prevent the interaction of PARD3 with F11R/JAM1, thereby preventing tight junction assembly.
Storage Condition and Buffer	Rabbit IgG in phosphate buffered saline , pH 7.4, 150mM NaCl, 0.02% sodium azide and 50% glycerol. Store at +4°C short term. Store at -20°C long term. Avoid freeze / thaw cycle.

### PAR6 Antibody - Protein Information

**Name** PARD6A

**Synonyms** PAR6A

#### Function

Adapter protein involved in asymmetrical cell division and cell polarization processes. Probably involved in the formation of epithelial tight junctions. Association with PARD3 may prevent the interaction of PARD3 with F11R/JAM1, thereby preventing tight junction assembly. The PARD6-PARD3 complex links GTP-bound Rho small GTPases to atypical protein kinase C proteins (PubMed:<a href="http://www.uniprot.org/citations/10873802" target="\_blank">10873802</a>). Regulates centrosome organization and function. Essential for the centrosomal recruitment of key

proteins that control centrosomal microtubule organization (PubMed:<a href="http://www.uniprot.org/citations/20719959" target="\_blank">20719959</a>).

#### Cellular Location

Cytoplasm. Cell membrane. Cell projection, ruffle. Cell junction, tight junction. Cytoplasm, cytoskeleton, microtubule organizing center, centrosome, centriolar satellite. Cytoplasm, cytoskeleton, microtubule organizing center, centrosome Note=Colocalizes with GTP-bound CDC42 or RAC1 at membrane ruffles and with PARD3 and PRKCI at epithelial tight junctions. Recruited to the centrosome by a microtubule and dynein-dynactin-dependent mechanism

#### Tissue Location

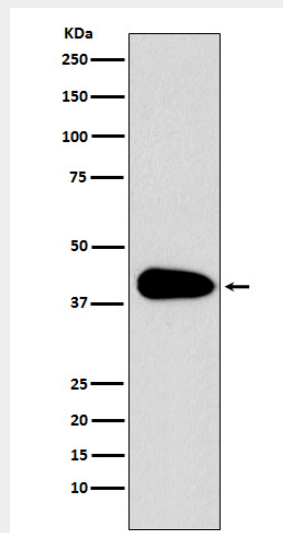
Expressed in pancreas, skeletal muscle, brain and heart. Weakly expressed in kidney and placenta

### PAR6 Antibody - Protocols

Provided below are standard protocols that you may find useful for product applications.

- [Western Blot](#)
- [Blocking Peptides](#)
- [Dot Blot](#)
- [Immunohistochemistry](#)
- [Immunofluorescence](#)
- [Immunoprecipitation](#)
- [Flow Cytometry](#)
- [Cell Culture](#)

### PAR6 Antibody - Images



Western blot analysis of PAR6 expression in Jurkat cell lysate.