

**Sprouty 4 Antibody**  
Rabbit mAb  
Catalog # AP91718

## Specification

---

### Sprouty 4 Antibody - Product Information

Application	WB, FC, ICC, IP
Primary Accession	<a href="#">O9C004</a>
Reactivity	Rat
Clonality	Monoclonal
<b>Other Names</b>	
Sprouty homolog 4; SPRY 4;	
Isotype	Rabbit IgG
Host	Rabbit
Calculated MW	32541 Da

### Sprouty 4 Antibody - Additional Information

Purification	Affinity-chromatography
Immunogen	A synthesized peptide derived from human Sprouty 4
Description	Suppresses the insulin receptor and EGFR-transduced MAPK signaling pathway, but does not inhibit MAPK activation by a constitutively active mutant Ras. Probably impairs the formation of GTP-Ras.
Storage Condition and Buffer	Rabbit IgG in phosphate buffered saline , pH 7.4, 150mM NaCl, 0.02% sodium azide and 50% glycerol. Store at +4°C short term. Store at -20°C long term. Avoid freeze / thaw cycle.

### Sprouty 4 Antibody - Protein Information

**Name** SPRY4

#### Function

Suppresses the insulin receptor and EGFR-transduced MAPK signaling pathway, but does not inhibit MAPK activation by a constitutively active mutant Ras (PubMed:<a href="http://www.uniprot.org/citations/12027893" target="\_blank">12027893</a>). Probably impairs the formation of GTP-Ras (PubMed:<a href="http://www.uniprot.org/citations/12027893" target="\_blank">12027893</a>). Inhibits Ras-independent, but not Ras-dependent, activation of RAF1 (PubMed:<a href="http://www.uniprot.org/citations/12717443" target="\_blank">12717443</a>). Represses integrin-mediated cell spreading via inhibition of TESK1-mediated phosphorylation of cofilin (PubMed:<a href="http://www.uniprot.org/citations/15584898" target="\_blank">15584898</a>).

#### Cellular Location

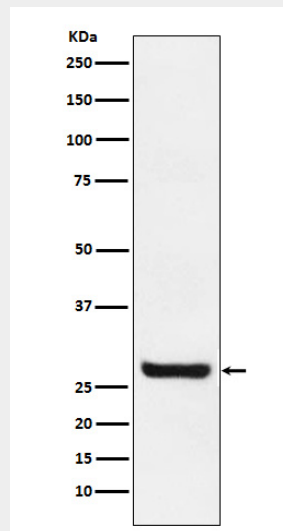
Cytoplasm. Cell projection, ruffle membrane; Peripheral membrane protein; Cytoplasmic side.  
Note=Found in the cytoplasm in unstimulated cells but is translocated to the membrane ruffles in cells stimulated with EGF (epidermal growth factor) (By similarity). Colocalizes with TESK1 in vesicular spots in the cytoplasm (PubMed:15584898) {ECO:0000250|UniProtKB:Q9WTP2, ECO:0000269|PubMed:15584898}

### Sprouty 4 Antibody - Protocols

Provided below are standard protocols that you may find useful for product applications.

- [Western Blot](#)
- [Blocking Peptides](#)
- [Dot Blot](#)
- [Immunohistochemistry](#)
- [Immunofluorescence](#)
- [Immunoprecipitation](#)
- [Flow Cytometry](#)
- [Cell Culture](#)

### Sprouty 4 Antibody - Images



Western blot analysis of Sprouty 4 expression in MCF7 cell lysate.