

IGFBP7 Antibody
Rabbit mAb
Catalog # AP91712

Specification

IGFBP7 Antibody - Product Information

Application	WB, IHC, FC, ICC
Primary Accession	Q16270
Reactivity	Rat
Clonality	Monoclonal
Other Names	
AGM; PSF; TAF; FSTL2; IBP-7; MAC25; IGFBP-7; RAMSVPS; IGFBP-7v; IGFBPRP1;	
Isotype	Rabbit IgG
Host	Rabbit
Calculated MW	29130 Da

IGFBP7 Antibody - Additional Information

Purification	Affinity-chromatography
Immunogen	A synthesized peptide derived from human IGFBP7
Description	Binds IGF-I and IGF-II with a relatively low affinity. Stimulates prostacyclin (PGI ₂) production. Stimulates cell adhesion.
Storage Condition and Buffer	Rabbit IgG in phosphate buffered saline , pH 7.4, 150mM NaCl, 0.02% sodium azide and 50% glycerol. Store at +4°C short term. Store at -20°C long term. Avoid freeze / thaw cycle.

IGFBP7 Antibody - Protein Information

Name IGFBP7

Synonyms MAC25, PSF

Function

Binds IGF-I and IGF-II with a relatively low affinity. Stimulates prostacyclin (PGI₂) production. Stimulates cell adhesion.

Cellular Location

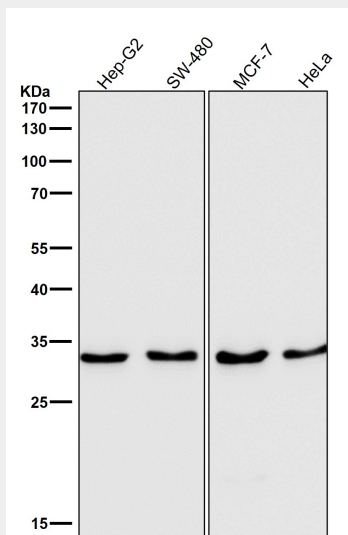
Secreted.

IGFBP7 Antibody - Protocols

Provided below are standard protocols that you may find useful for product applications.

- [Western Blot](#)
- [Blocking Peptides](#)
- [Dot Blot](#)
- [Immunohistochemistry](#)
- [Immunofluorescence](#)
- [Immunoprecipitation](#)
- [Flow Cytometry](#)
- [Cell Culture](#)

IGFBP7 Antibody - Images



Western blot analysis of IGFBP7 expression in SW480 cell lysate.