

EB3 Antibody
Rabbit mAb
Catalog # AP91706

Specification

EB3 Antibody - Product Information

Application	WB, IHC, FC, ICC
Primary Accession	O9UPY8
Reactivity	Rat
Clonality	Monoclonal
Other Names	
EB3; EBF3; MAPRE3; RP/EB Family; RP3;	
Isotype	Rabbit IgG
Host	Rabbit
Calculated MW	31982 Da

EB3 Antibody - Additional Information

Purification	Affinity-chromatography
Immunogen	A synthesized peptide derived from human EB3
Description	May be involved in microtubule polymerization, and spindle function by stabilizing microtubules and anchoring them at centrosomes. May play a role in cell migration.
Storage Condition and Buffer	Rabbit IgG in phosphate buffered saline , pH 7.4, 150mM NaCl, 0.02% sodium azide and 50% glycerol. Store at +4°C short term. Store at -20°C long term. Avoid freeze / thaw cycle.

EB3 Antibody - Protein Information

Name MAPRE3

Function

Plus-end tracking protein (+TIP) that binds to the plus-end of microtubules and regulates the dynamics of the microtubule cytoskeleton (PubMed:[19255245](http://www.uniprot.org/citations/19255245), PubMed:[28814570](http://www.uniprot.org/citations/28814570)). Promotes microtubule growth (PubMed:[19255245](http://www.uniprot.org/citations/19255245), PubMed:[28814570](http://www.uniprot.org/citations/28814570)). May be involved in spindle function by stabilizing microtubules and anchoring them at centrosomes (PubMed:[19255245](http://www.uniprot.org/citations/19255245), PubMed:[28814570](http://www.uniprot.org/citations/28814570)). Also acts as a regulator of minus- end microtubule organization: interacts with the complex formed by AKAP9

and PDE4DIP, leading to recruit CAMSAP2 to the Golgi apparatus, thereby tethering non-centrosomal minus-end microtubules to the Golgi, an important step for polarized cell movement (PubMed:28814570). Promotes elongation of CAMSAP2-decorated microtubule stretches on the minus-end of microtubules (PubMed:28814570).

Cellular Location

Cytoplasm, cytoskeleton. Note=Associated with the microtubule network. Detected at the plus end of microtubules

Tissue Location

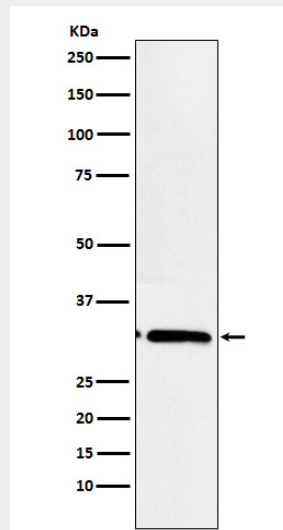
Predominantly expressed in brain and muscle.

EB3 Antibody - Protocols

Provided below are standard protocols that you may find useful for product applications.

- [Western Blot](#)
- [Blocking Peptides](#)
- [Dot Blot](#)
- [Immunohistochemistry](#)
- [Immunofluorescence](#)
- [Immunoprecipitation](#)
- [Flow Cytometry](#)
- [Cell Culture](#)

EB3 Antibody - Images



Western blot analysis of EB3 expression in Rat muscle cell lysate.