

PSME1 Antibody
Rabbit mAb
Catalog # AP91701

Specification

PSME1 Antibody - Product Information

Application	WB, ICC, IP
Primary Accession	Q06323
Reactivity	Rat
Clonality	Monoclonal
Other Names	
PA28A; IFI5111; REGalpha; PA28alpha;	
Isotype	Rabbit IgG
Host	Rabbit
Calculated MW	28723 Da

PSME1 Antibody - Additional Information

Purification	Affinity-chromatography
Immunogen	A synthesized peptide derived from human PSME1
Description	Implicated in immunoproteasome assembly and required for efficient antigen processing. The PA28 activator complex enhances the generation of class I binding peptides by altering the cleavage pattern of the proteasome.
Storage Condition and Buffer	Rabbit IgG in phosphate buffered saline , pH 7.4, 150mM NaCl, 0.02% sodium azide and 50% glycerol. Store at +4°C short term. Store at -20°C long term. Avoid freeze / thaw cycle.

PSME1 Antibody - Protein Information

Name PSME1

Synonyms IFI5111

Function

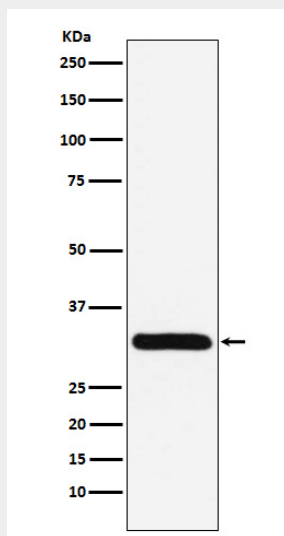
Implicated in immunoproteasome assembly and required for efficient antigen processing. The PA28 activator complex enhances the generation of class I binding peptides by altering the cleavage pattern of the proteasome.

PSME1 Antibody - Protocols

Provided below are standard protocols that you may find useful for product applications.

- [Western Blot](#)
- [Blocking Peptides](#)
- [Dot Blot](#)
- [Immunohistochemistry](#)
- [Immunofluorescence](#)
- [Immunoprecipitation](#)
- [Flow Cytometry](#)
- [Cell Culture](#)

PSME1 Antibody - Images



Western blot analysis of PSME1 expression in Jurkat cell lysate.