

Fructose 6 Phosphate Kinase Antibody
Rabbit mAb
Catalog # AP91699**Specification**

Fructose 6 Phosphate Kinase Antibody - Product Information

| | |
|---|------------------------|
| Application | WB, FC, ICC |
| Primary Accession | P08237 |
| Reactivity | Rat |
| Clonality | Monoclonal |
| Other Names | |
| GSD7; PFK1; PFKA; PFKX; PFK-1; Phosphohexokinase; | |
| Isotype | Rabbit IgG |
| Host | Rabbit |
| Calculated MW | 85183 Da |

Fructose 6 Phosphate Kinase Antibody - Additional Information

| | |
|------------------------------|---|
| Purification | Affinity-chromatography |
| Immunogen | A synthesized peptide derived from human Fructose 6 Phosphate Kinase |
| Description | Carbohydrate degradation; glycolysis; D-glyceraldehyde 3-phosphate and glycerone phosphate from D-glucose: step 3/4. |
| Storage Condition and Buffer | Rabbit IgG in phosphate buffered saline , pH 7.4, 150mM NaCl, 0.02% sodium azide and 50% glycerol. Store at +4°C short term. Store at -20°C long term. Avoid freeze / thaw cycle. |

Fructose 6 Phosphate Kinase Antibody - Protein Information**Name** PFKM**Synonyms** PFKX**Function**

Catalyzes the phosphorylation of D-fructose 6-phosphate to fructose 1,6-bisphosphate by ATP, the first committing step of glycolysis.

Cellular Location

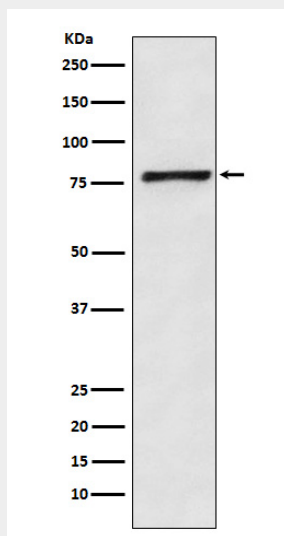
Cytoplasm {ECO:0000255|HAMAP-Rule:MF_03184}.

Fructose 6 Phosphate Kinase Antibody - Protocols

Provided below are standard protocols that you may find useful for product applications.

- [Western Blot](#)
- [Blocking Peptides](#)
- [Dot Blot](#)
- [Immunohistochemistry](#)
- [Immunofluorescence](#)
- [Immunoprecipitation](#)
- [Flow Cytometry](#)
- [Cell Culture](#)

Fructose 6 Phosphate Kinase Antibody - Images



Western blot analysis of Fructose 6 Phosphate Kinase expression in HeLa cell lysate.