

**Exportin2 Antibody**  
Rabbit mAb  
Catalog # AP91688

## Specification

---

### Exportin2 Antibody - Product Information

Application	WB, IHC, FC, ICC
Primary Accession	<a href="#">P55060</a>
Clonality	Monoclonal
<b>Other Names</b>	
CSE1L; CAS; CSE1; Exp2; Importin-alpha re-exporter; Exportin-2; XPO2;	
Isotype	Rabbit IgG
Host	Rabbit
Calculated MW	110417 Da

### Exportin2 Antibody - Additional Information

Purification	<b>Affinity-chromatography</b>
Immunogen	<b>A synthesized peptide derived from human Exportin2</b>
Description	<b>Export receptor for importin-alpha. Mediates importin-alpha re-export from the nucleus to the cytoplasm after import substrates (cargos) have been released into the nucleoplasm. In the nucleus binds cooperatively to importin-alpha and to the GTPase Ran in its active GTP-bound form.</b>
Storage Condition and Buffer	<b>Rabbit IgG in phosphate buffered saline , pH 7.4, 150mM NaCl, 0.02% sodium azide and 50% glycerol. Store at +4°C short term. Store at -20°C long term. Avoid freeze / thaw cycle.</b>

### Exportin2 Antibody - Protein Information

**Name** CSE1L

**Synonyms** CAS {ECO:0000303|PubMed:7479798}, XPO2

#### Function

Export receptor for importin-alpha. Mediates importin-alpha re-export from the nucleus to the cytoplasm after import substrates (cargos) have been released into the nucleoplasm. In the nucleus binds cooperatively to importin-alpha and to the GTPase Ran in its active GTP-bound form. Docking of this trimeric complex to the nuclear pore complex (NPC) is mediated through binding to nucleoporins. Upon transit of a nuclear export complex into the cytoplasm, disassembling of the complex and hydrolysis of Ran-GTP to Ran-GDP (induced by RANBP1 and RANGAP1, respectively) cause release of the importin-alpha from the export receptor. CSE1L/XPO2 then return to the nuclear compartment and mediate another round of transport. The directionality of nuclear export

is thought to be conferred by an asymmetric distribution of the GTP- and GDP-bound forms of Ran between the cytoplasm and nucleus.

#### Cellular Location

Cytoplasm. Nucleus. Note=Shuttles between the nucleus and the cytoplasm.

#### Tissue Location

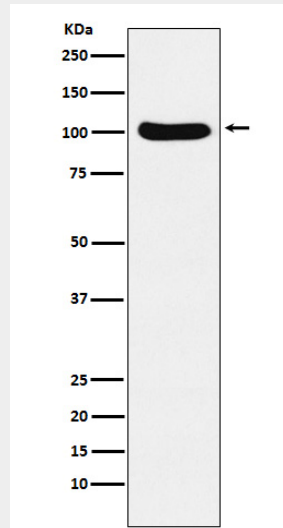
Detected in brain, placenta, ovary, testis and trachea (at protein level) (PubMed:10331944). Widely expressed (PubMed:10331944). Highly expressed in testis and in proliferating cells (PubMed:10331944, PubMed:7479798).

### Exportin2 Antibody - Protocols

Provided below are standard protocols that you may find useful for product applications.

- [Western Blot](#)
- [Blocking Peptides](#)
- [Dot Blot](#)
- [Immunohistochemistry](#)
- [Immunofluorescence](#)
- [Immunoprecipitation](#)
- [Flow Cytometry](#)
- [Cell Culture](#)

### Exportin2 Antibody - Images



Western blot analysis of Cellular Apoptosis Susceptibility expression in Ramos cell lysate.