

CRMP1 Antibody
Rabbit mAb
Catalog # AP91675

Specification

CRMP1 Antibody - Product Information

Application	WB, IHC, FC, ICC, IP
Primary Accession	O14194
Reactivity	Rat
Clonality	Monoclonal
Other Names	
CRMP 1; Crmp1; DPYSL1; DRP1; ULIP-3; Ulip3;	
Isotype	Rabbit IgG
Host	Rabbit
Calculated MW	62184 Da

CRMP1 Antibody - Additional Information

Purification	Affinity-chromatography
Immunogen	A synthesized peptide derived from human CRMP1
Description	Necessary for signaling by class 3 semaphorins and subsequent remodeling of the cytoskeleton. Plays a role in axon guidance, invasive growth and cell migration.
Storage Condition and Buffer	Rabbit IgG in phosphate buffered saline , pH 7.4, 150mM NaCl, 0.02% sodium azide and 50% glycerol. Store at +4°C short term. Store at -20°C long term. Avoid freeze / thaw cycle.

CRMP1 Antibody - Protein Information

Name CRMP1

Synonyms DPYSL1, ULIP3

Function

Necessary for signaling by class 3 semaphorins and subsequent remodeling of the cytoskeleton (PubMed: [25358863](http://www.uniprot.org/citations/25358863)). Plays a role in axon guidance (PubMed: [25358863](http://www.uniprot.org/citations/25358863)). During the axon guidance process, acts downstream of SEMA3A to promote FLNA dissociation from F-actin which results in the rearrangement of the actin cytoskeleton and the collapse of the growth cone (PubMed: [25358863](http://www.uniprot.org/citations/25358863)). Involved in invasive growth and cell migration (PubMed: [11562390](http://www.uniprot.org/citations/11562390)). May participate in cytokinesis (PubMed: [11562390](http://www.uniprot.org/citations/11562390)).

href="http://www.uniprot.org/citations/19799413" target="_blank">19799413).

Cellular Location

Cytoplasm. Cytoplasm, cytoskeleton, microtubule organizing center, centrosome. Cytoplasm, cytoskeleton, spindle. Cell projection, growth cone {ECO:0000250|UniProtKB:P97427}. Cytoplasm, cytoskeleton {ECO:0000250|UniProtKB:P97427}. Perikaryon {ECO:0000250|UniProtKB:P97427}. Note=Associated with centrosomes and the mitotic spindle during metaphase (PubMed:11562390). Colocalizes with FLNA and tubulin in the central region of DRG neuron growth cone (By similarity). Following SEMA3A stimulation of DRG neurons, colocalizes with F-actin (By similarity) {ECO:0000250|UniProtKB:P97427, ECO:0000269|PubMed:11562390}

Tissue Location

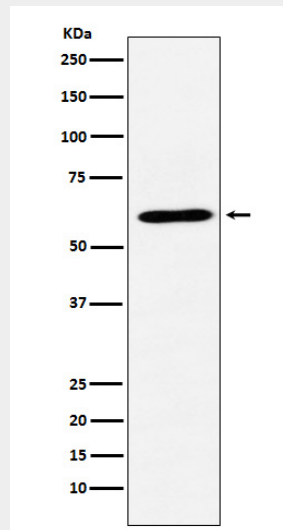
Brain.

CRMP1 Antibody - Protocols

Provided below are standard protocols that you may find useful for product applications.

- [Western Blot](#)
- [Blocking Peptides](#)
- [Dot Blot](#)
- [Immunohistochemistry](#)
- [Immunofluorescence](#)
- [Immunoprecipitation](#)
- [Flow Cytometry](#)
- [Cell Culture](#)

CRMP1 Antibody - Images



Western blot analysis of CRMP1 expression in SH-SY5Y cell lysate.