

**MMP17 Antibody**  
Rabbit mAb  
Catalog # AP91672

## Specification

---

### MMP17 Antibody - Product Information

Application	WB, IHC, ICC
Primary Accession	<a href="#">O9ULZ9</a>
Reactivity	Rat
Clonality	Monoclonal
<b>Other Names</b>	
MMP 17; Mmp17; MT MMP4; MT-MMP 4; MT4 MMP; MT4-MMP; MT4MMP; MTMMP4;	
Isotype	Rabbit IgG
Host	Rabbit
Calculated MW	66653 Da

### MMP17 Antibody - Additional Information

Purification	<b>Affinity-chromatography</b>
Immunogen	<b>A synthesized peptide derived from human MMP17</b>
Description	<b>Endopeptidase that degrades various components of the extracellular matrix, such as fibrin. May be involved in the activation of membrane-bound precursors of growth factors or inflammatory mediators, such as tumor necrosis factor-alpha. May also be involved in tumoral process.</b>
Storage Condition and Buffer	<b>Rabbit IgG in phosphate buffered saline , pH 7.4, 150mM NaCl, 0.02% sodium azide and 50% glycerol. Store at +4°C short term. Store at -20°C long term. Avoid freeze / thaw cycle.</b>

### MMP17 Antibody - Protein Information

**Name** MMP17

**Synonyms** MT4MMP

#### **Function**

Endopeptidase that degrades various components of the extracellular matrix, such as fibrin. May be involved in the activation of membrane-bound precursors of growth factors or inflammatory mediators, such as tumor necrosis factor-alpha. May also be involved in tumoral process. Cleaves pro-TNF-alpha at the '74-Ala-|-Gln-75' site. Not obvious if able to proteolytically activate progelatinase A. Does not hydrolyze collagen types I, II, III, IV and V, gelatin, fibronectin, laminin, decorin nor alpha1-antitrypsin.

### Cellular Location

[Isoform Long]: Cell membrane; Lipid-anchor, GPI- anchor; Extracellular side. Secreted, extracellular space, extracellular matrix

### Tissue Location

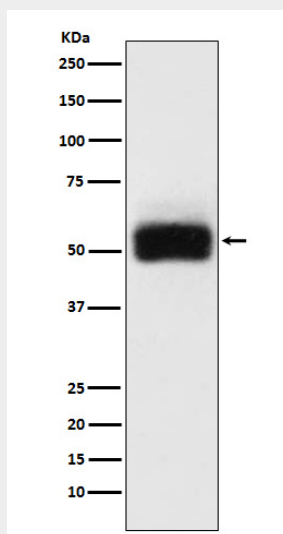
Expressed in brain, leukocytes, colon, ovary testis and breast cancer. Expressed also in many transformed and non- transformed cell types

### MMP17 Antibody - Protocols

Provided below are standard protocols that you may find useful for product applications.

- [Western Blot](#)
- [Blocking Peptides](#)
- [Dot Blot](#)
- [Immunohistochemistry](#)
- [Immunofluorescence](#)
- [Immunoprecipitation](#)
- [Flow Cytometry](#)
- [Cell Culture](#)

### MMP17 Antibody - Images



Western blot analysis of MMP17 expression in HeLa cell lysate.