

Calmegin Antibody
Rabbit mAb
Catalog # AP91670**Specification**

Calmegin Antibody - Product Information

Application	WB, IHC, ICC, IP
Primary Accession	O14967
Reactivity	Rat
Clonality	Monoclonal

Other Names

CLGN; MEG 1 antigen; Calnexin-T; Calmegin precursor; Calmegin;

Isotype	Rabbit IgG
Host	Rabbit
Calculated MW	70039 Da

Calmegin Antibody - Additional Information

Purification	Affinity-chromatography
Immunogen	A synthesized peptide derived from human Calmegin
Description	Functions during spermatogenesis as a chaperone for a range of client proteins that are important for sperm adhesion onto the egg zona pellucida and for subsequent penetration of the zona pellucida. Required for normal sperm migration from the uterus into the oviduct. Required for normal male fertility. Binds calcium ions (By similarity).
Storage Condition and Buffer	Rabbit IgG in phosphate buffered saline , pH 7.4, 150mM NaCl, 0.02% sodium azide and 50% glycerol. Store at +4°C short term. Store at -20°C long term. Avoid freeze / thaw cycle.

Calmegin Antibody - Protein Information**Name** CLGN**Function**

Functions during spermatogenesis as a chaperone for a range of client proteins that are important for sperm adhesion onto the egg zona pellucida and for subsequent penetration of the zona pellucida. Required for normal sperm migration from the uterus into the oviduct. Required for normal male fertility. Binds calcium ions (By similarity).

Cellular Location

Endoplasmic reticulum membrane; Single-pass type I membrane protein

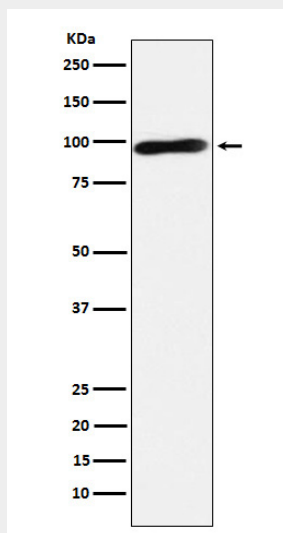
Tissue Location

Detected in testis (at protein level). Detected in testis.

Calmegin Antibody - Protocols

Provided below are standard protocols that you may find useful for product applications.

- [Western Blot](#)
- [Blocking Peptides](#)
- [Dot Blot](#)
- [Immunohistochemistry](#)
- [Immunofluorescence](#)
- [Immunoprecipitation](#)
- [Flow Cytometry](#)
- [Cell Culture](#)

Calmegin Antibody - Images

Western blot analysis of Calmegin expression in Jurkat cell lysate.