

**PFDN5 Antibody**  
Rabbit mAb  
Catalog # AP91661

## Specification

---

### PFDN5 Antibody - Product Information

Application	WB, IHC, IP
Primary Accession	<a href="#">O99471</a>
Reactivity	Rat
Clonality	Monoclonal
<b>Other Names</b>	
EIG 1; Eig1; MM1; PFD5; PFDN5; Prefoldin 5;	
Isotype	Rabbit IgG
Host	Rabbit
Calculated MW	17328 Da

### PFDN5 Antibody - Additional Information

Purification	Affinity-chromatography
Immunogen	A synthesized peptide derived from human PFDN5
Description	Binds specifically to cytosolic chaperonin (c-CPN) and transfers target proteins to it. Binds to nascent polypeptide chain and promotes folding in an environment in which there are many competing pathways for nonnative proteins.
Storage Condition and Buffer	Rabbit IgG in phosphate buffered saline , pH 7.4, 150mM NaCl, 0.02% sodium azide and 50% glycerol. Store at +4°C short term. Store at -20°C long term. Avoid freeze / thaw cycle.

### PFDN5 Antibody - Protein Information

**Name** PFDN5

**Synonyms** MM1, PFD5

#### Function

Binds specifically to cytosolic chaperonin (c-CPN) and transfers target proteins to it. Binds to nascent polypeptide chain and promotes folding in an environment in which there are many competing pathways for nonnative proteins. Represses the transcriptional activity of MYC.

#### Cellular Location

[Isoform 1]: Nucleus. [Isoform 3]: Nucleus.

#### Tissue Location

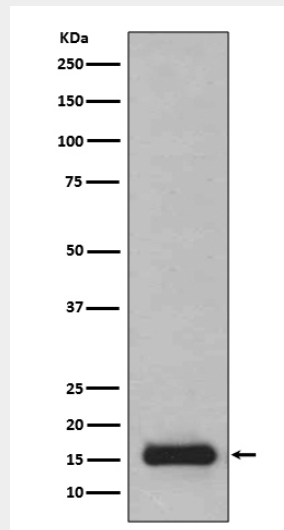
Highly expressed in pancreas and skeletal muscle and moderately in other tissues

### **PFDN5 Antibody - Protocols**

Provided below are standard protocols that you may find useful for product applications.

- [Western Blot](#)
- [Blocking Peptides](#)
- [Dot Blot](#)
- [Immunohistochemistry](#)
- [Immunofluorescence](#)
- [Immunoprecipitation](#)
- [Flow Cytometry](#)
- [Cell Culture](#)

### **PFDN5 Antibody - Images**



Western blot analysis of PFDN5 expression in 293T cell lysate.