

MBD2 Antibody
Rabbit mAb
Catalog # AP91620

Specification

MBD2 Antibody - Product Information

| | |
|-----------------------------------|------------------------|
| Application | WB, IHC, FC, ICC, IP |
| Primary Accession | Q9UBB5 |
| Reactivity | Rat |
| Clonality | Monoclonal |
| Other Names | |
| Demethylase; DMTase; Mbd2; MBD2a; | |
| Isotype | Rabbit IgG |
| Host | Rabbit |
| Calculated MW | 43255 Da |

MBD2 Antibody - Additional Information

| | |
|------------------------------|--|
| Purification | Affinity-chromatography |
| Immunogen | A synthesized peptide derived from human MBD2 |
| Description | Binds CpG islands in promoters where the DNA is methylated at position 5 of cytosine within CpG dinucleotides. Binds hemimethylated DNA as well. Recruits histone deacetylases and DNA methyltransferases. |
| Storage Condition and Buffer | Rabbit IgG in phosphate buffered saline , pH 7.4, 150mM NaCl, 0.02% sodium azide and 50% glycerol. Store at +4°C short term. Store at -20°C long term. Avoid freeze / thaw cycle. |

MBD2 Antibody - Protein Information

Name MBD2 ([HGNC:6917](#))

Function

Binds CpG islands in promoters where the DNA is methylated at position 5 of cytosine within CpG dinucleotides (PubMed:[9774669](http://www.uniprot.org/citations/9774669)). Binds hemimethylated DNA as well (PubMed:[10947852](http://www.uniprot.org/citations/10947852), PubMed:[24307175](http://www.uniprot.org/citations/24307175)). Recruits histone deacetylases and DNA methyltransferases to chromatin (PubMed:[10471499](http://www.uniprot.org/citations/10471499), PubMed:[10947852](http://www.uniprot.org/citations/10947852)). Acts as a component of the histone deacetylase NuRD complex which participates in the remodeling of chromatin (PubMed:[16428440](http://www.uniprot.org/citations/16428440))

target="_blank">16428440, PubMed:28977666). Acts as a transcriptional repressor and plays a role in gene silencing (PubMed:10471499, PubMed:10947852, PubMed:16415179). Functions as a scaffold protein, targeting GATAD2A and GATAD2B to chromatin to promote repression (PubMed:16415179). May enhance the activation of some unmethylated cAMP-responsive promoters (PubMed:12665568).

Cellular Location

Nucleus. Chromosome Note=Nuclear, in discrete foci (PubMed:12183469). Detected at replication foci in late S phase. Localizes to methylated chromatin (PubMed:16428440). Localizes to sites of DNA damage in a manner partially dependent on ZMYND8 (PubMed:27732854)

Tissue Location

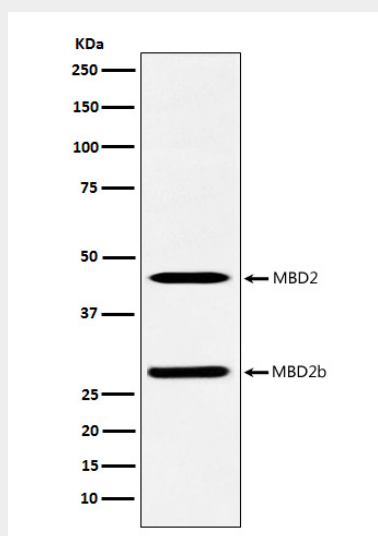
Highly expressed in brain, heart, kidney, stomach, testis and placenta.

MBD2 Antibody - Protocols

Provided below are standard protocols that you may find useful for product applications.

- [Western Blot](#)
- [Blocking Peptides](#)
- [Dot Blot](#)
- [Immunohistochemistry](#)
- [Immunofluorescence](#)
- [Immunoprecipitation](#)
- [Flow Cytometry](#)
- [Cell Culture](#)

MBD2 Antibody - Images



Western blot analysis of MBD2 expression in A375 cell lysate.