

CD30 Antibody
Rabbit mAb
Catalog # AP91618

Specification

CD30 Antibody - Product Information

Application	WB, IHC
Primary Accession	P28908
Clonality	Monoclonal
Other Names	
CD30; D1S166E; KI1; Tnfrsf8;	
Isotype	Rabbit IgG
Host	Rabbit
Calculated MW	63747 Da

CD30 Antibody - Additional Information

Purification	Affinity-chromatography
Immunogen	A synthesized peptide derived from human CD30
Description	Receptor for TNFSF8/CD30L. May play a role in the regulation of cellular growth and transformation of activated lymphoblasts. Regulates gene expression through activation of NF-kappa-B.
Storage Condition and Buffer	Rabbit IgG in phosphate buffered saline , pH 7.4, 150mM NaCl, 0.02% sodium azide and 50% glycerol. Store at +4°C short term. Store at -20°C long term. Avoid freeze / thaw cycle.

CD30 Antibody - Protein Information

Name TNFRSF8 ([HGNC:11923](#))

Function

Receptor for TNFSF8/CD30L (PubMed:[8391931](http://www.uniprot.org/citations/8391931)). May play a role in the regulation of cellular growth and transformation of activated lymphoblasts. Regulates gene expression through activation of NF-kappa- B (PubMed:[8999898](http://www.uniprot.org/citations/8999898)).

Cellular Location

[Isoform 1]: Cell membrane; Single-pass type I membrane protein

Tissue Location

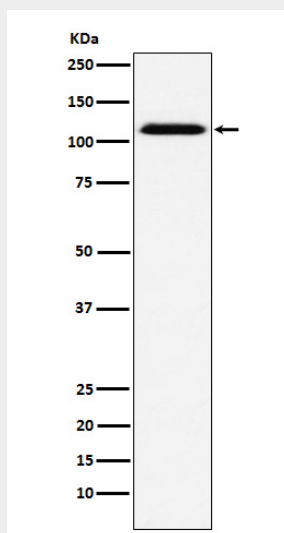
[Isoform 2]: Detected in alveolar macrophages (at protein level).

CD30 Antibody - Protocols

Provided below are standard protocols that you may find useful for product applications.

- [Western Blot](#)
- [Blocking Peptides](#)
- [Dot Blot](#)
- [Immunohistochemistry](#)
- [Immunofluorescence](#)
- [Immunoprecipitation](#)
- [Flow Cytometry](#)
- [Cell Culture](#)

CD30 Antibody - Images



Western blot analysis of CD30 expression in A431 cell lysate.