

ANP Antibody
Rabbit mAb
Catalog # AP91605

Specification

ANP Antibody - Product Information

Application **WB, IP**
Primary Accession [P01160](#)
Clonality **Monoclonal**
Other Names
ANF; ANP; PND; ATRFB6; CDD-ANF; NPPA; Natriuretic peptides A; LANP; VSDL;

Isotype **Rabbit IgG**
Host **Rabbit**
Calculated MW **16396 Da**

ANP Antibody - Additional Information

Purification **Affinity-chromatography**
Immunogen **A synthesized peptide derived from human ANP**
Description **Hormone playing a key role in cardiovascular homeostasis through regulation of natriuresis, diuresis, and vasodilation. Also plays a role in female pregnancy by promoting trophoblast invasion and spiral artery remodeling in uterus.**
Storage Condition and Buffer **Rabbit IgG in phosphate buffered saline , pH 7.4, 150mM NaCl, 0.02% sodium azide and 50% glycerol. Store at +4°C short term. Store at -20°C long term. Avoid freeze / thaw cycle.**

ANP Antibody - Protein Information

Name NPPA

Synonyms ANP, PND

Function

[Atrial natriuretic peptide]: Hormone that plays a key role in mediating cardio-renal homeostasis, and is involved in vascular remodeling and regulating energy metabolism (PubMed:15741263, PubMed:16875975, PubMed:18835931, PubMed:21672517, PubMed:22307324, PubMed:2532366, PubMed:2825692, PubMed:7595132, PubMed:7720651, PubMed:8087923, PubMed:8653797). Acts by specifically binding and stimulating NPR1 to produce cGMP, which in turn activates effector proteins, such as PRKG1, that drive various biological responses (PubMed:1660465, PubMed:1672777, PubMed:21098034, PubMed:2162527, PubMed:22307324, PubMed:25401746, PubMed:2825692, PubMed:7720651, PubMed:8384600, PubMed:9893117). Regulates vasodilation, natriuresis, diuresis and aldosterone synthesis and is therefore essential for regulating blood pressure, controlling the extracellular fluid volume and maintaining the fluid-electrolyte balance (PubMed:2532366, PubMed:2825692, PubMed:7595132, PubMed:7720651, PubMed:8087923, PubMed:8653797). Also involved in inhibiting cardiac remodeling and cardiac hypertrophy by inducing cardiomyocyte apoptosis and attenuating the growth of cardiomyocytes and fibroblasts (PubMed:16875975). Plays a role in female pregnancy by promoting trophoblast invasion and spiral artery remodeling in uterus, and thus prevents pregnancy-induced hypertension (By similarity). In adipose tissue, acts in various cGMP- and PKG-dependent pathways to regulate lipid metabolism and energy homeostasis (PubMed:15741263, PubMed:18835931, PubMed:21672517, PubMed:22307324). This includes up-regulating lipid metabolism and mitochondrial oxygen utilization by activating the AMP-activated protein kinase (AMPK), and increasing energy expenditure by acting via MAPK11 to promote the UCP1-dependent thermogenesis of brown adipose tissue (PubMed:15741263, PubMed:18835931, PubMed:21672517, PubMed:22307324). Binds the clearance receptor NPR3 which removes the hormone from circulation (PubMed:1672777).

Cellular Location

[Long-acting natriuretic peptide]: Secreted. Note=Detected in blood. [Kaliuretic peptide]: Secreted. Note=Detected in blood [Atrial natriuretic peptide]: Secreted. Perikaryon. Cell projection. Note=Detected in blood (PubMed:15741263, PubMed:18835931, PubMed:2532366, PubMed:7955907, PubMed:7984506, PubMed:8351194, PubMed:8653797, PubMed:8779891). Detected in urine in one study (PubMed:8351194). However, in another study, was not detected in urine (PubMed:7984506). Detected in cytoplasmic bodies and neuronal processes of pyramidal neurons (layers II-VI) (PubMed:30534047) Increased secretion in response to the vasopressin AVP (By similarity) Likely to be secreted in response to an increase in atrial pressure or atrial stretch (PubMed:2532366). In kidney cells, secretion increases in response to activated guanylyl cyclases and increased intracellular cAMP levels (PubMed:9893117). Plasma levels increase 15 minutes

after a high-salt meal, and decrease back to normal plasma levels 1 hr later (PubMed:8779891).
{ECO:0000250|UniProtKB:P01161, ECO:0000269|PubMed:15741263,
ECO:0000269|PubMed:18835931, ECO:0000269|PubMed:2532366,
ECO:0000269|PubMed:30534047, ECO:0000269|PubMed:7955907,
ECO:0000269|PubMed:7984506, ECO:0000269|PubMed:8351194, ECO:0000269|PubMed:8653797,
ECO:0000269|PubMed:8779891, ECO:0000269|PubMed:9893117}

Tissue Location

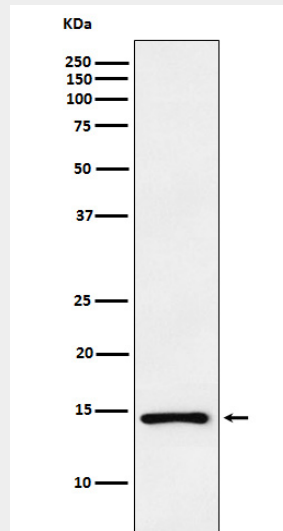
[Urodilatin]: Detected in the kidney distal tubular cells (at protein level) (PubMed:8384600, PubMed:9794555). Present in urine (at protein level) (PubMed:2972874, PubMed:8351194, PubMed:8779891, PubMed:9794555).

ANP Antibody - Protocols

Provided below are standard protocols that you may find useful for product applications.

- [Western Blot](#)
- [Blocking Peptides](#)
- [Dot Blot](#)
- [Immunohistochemistry](#)
- [Immunofluorescence](#)
- [Immunoprecipitation](#)
- [Flow Cytometry](#)
- [Cell Culture](#)

ANP Antibody - Images



Western blot analysis of ANP expression in PC3 cell lysate.