

mtTFA Antibody
Rabbit mAb
Catalog # AP91602

Specification

mtTFA Antibody - Product Information

Application	WB, IHC, ICC, IP
Primary Accession	Q00059
Clonality	Monoclonal
Other Names	
MtTF1; mtTFA; TCF6; TCF6L1; TCF6L2; TCF6L3; TFAM; Transcription factor 6;	
Isotype	Rabbit IgG
Host	Rabbit
Calculated MW	29097 Da

mtTFA Antibody - Additional Information

Purification	Affinity-chromatography
Immunogen	A synthesized peptide derived from human mtTFA
Description	Binds to the mitochondrial light strand promoter and functions in mitochondrial transcription regulation. Required for accurate and efficient promoter recognition by the mitochondrial RNA polymerase.
Storage Condition and Buffer	Rabbit IgG in phosphate buffered saline , pH 7.4, 150mM NaCl, 0.02% sodium azide and 50% glycerol. Store at +4°C short term. Store at -20°C long term. Avoid freeze / thaw cycle.

mtTFA Antibody - Protein Information

Name TFAM ([HGNC:11741](#))

Synonyms TCF6, TCF6L2

Function

Binds to the mitochondrial light strand promoter and functions in mitochondrial transcription regulation (PubMed: [29445193](http://www.uniprot.org/citations/29445193) target="_blank">29445193, PubMed: [32183942](http://www.uniprot.org/citations/32183942) target="_blank">32183942). Component of the mitochondrial transcription initiation complex, composed at least of TFB2M, TFAM and POLRMT that is required for basal transcription of mitochondrial DNA (PubMed: [29149603](http://www.uniprot.org/citations/29149603) target="_blank">29149603). In this complex, TFAM recruits POLRMT to a specific promoter whereas TFB2M induces structural changes in POLRMT to enable promoter opening and trapping of the DNA non-template strand (PubMed: [20410300](http://www.uniprot.org/citations/20410300))

target="_blank">20410300). Required for accurate and efficient promoter recognition by the mitochondrial RNA polymerase (PubMed:22037172). Promotes transcription initiation from the HSP1 and the light strand promoter by binding immediately upstream of transcriptional start sites (PubMed:22037172). Is able to unwind DNA (PubMed:22037172). Bends the mitochondrial light strand promoter DNA into a U-turn shape via its HMG boxes (PubMed:1737790). Required for maintenance of normal levels of mitochondrial DNA (PubMed:19304746, PubMed:22841477). May play a role in organizing and compacting mitochondrial DNA (PubMed:22037171).

Cellular Location

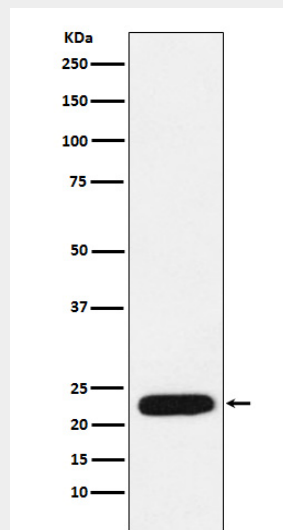
Mitochondrion. Mitochondrion matrix, mitochondrion nucleoid

mtTFA Antibody - Protocols

Provided below are standard protocols that you may find useful for product applications.

- [Western Blot](#)
- [Blocking Peptides](#)
- [Dot Blot](#)
- [Immunohistochemistry](#)
- [Immunofluorescence](#)
- [Immunoprecipitation](#)
- [Flow Cytometry](#)
- [Cell Culture](#)

mtTFA Antibody - Images



Western blot analysis of mtTFA expression in MCF7 cell lysate.