

IQGAP1 Antibody
Rabbit mAb
Catalog # AP91595**Specification**

IQGAP1 Antibody - Product Information

Application	WB, IHC, FC, ICC
Primary Accession	P46940
Clonality	Monoclonal
Other Names	
Iqgap1; p195; SAR1;	
Isotype	Rabbit IgG
Host	Rabbit
Calculated MW	189252 Da

IQGAP1 Antibody - Additional Information

Purification	Affinity-chromatography
Immunogen	A synthesized peptide derived from human IQGAP1
Description	Binds to activated CDC42 but does not stimulate its GTPase activity. It associates with calmodulin. Could serve as an assembly scaffold for the organization of a multimolecular complex that would interface incoming signals to the reorganization of the actin cytoskeleton at the plasma membrane.
Storage Condition and Buffer	Rabbit IgG in phosphate buffered saline , pH 7.4, 150mM NaCl, 0.02% sodium azide and 50% glycerol. Store at +4°C short term. Store at -20°C long term. Avoid freeze / thaw cycle.

IQGAP1 Antibody - Protein Information**Name** IQGAP1**Synonyms** KIAA0051**Function**

Plays a crucial role in regulating the dynamics and assembly of the actin cytoskeleton. Binds to activated CDC42 but does not stimulate its GTPase activity. It associates with calmodulin. Could serve as an assembly scaffold for the organization of a multimolecular complex that would interface incoming signals to the reorganization of the actin cytoskeleton at the plasma membrane. May promote neurite outgrowth (PubMed:15695813). May play a possible role in cell cycle regulation by contributing to cell cycle progression after DNA replication

arrest (PubMed:20883816).

Cellular Location

Cell membrane. Nucleus. Cytoplasm. Apical cell membrane. Basolateral cell membrane {ECO:0000250|UniProtKB:Q9JKF1}. Note=Subcellular distribution is regulated by the cell cycle, nuclear levels increase at G1/S phase (PubMed:20883816).

Tissue Location

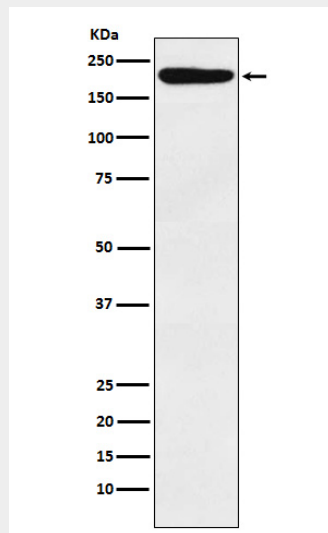
Expressed in the placenta, lung, and kidney (PubMed:8051149). A lower level expression is seen in the heart, liver, skeletal muscle and pancreas (PubMed:8051149)

IQGAP1 Antibody - Protocols

Provided below are standard protocols that you may find useful for product applications.

- [Western Blot](#)
- [Blocking Peptides](#)
- [Dot Blot](#)
- [Immunohistochemistry](#)
- [Immunofluorescence](#)
- [Immunoprecipitation](#)
- [Flow Cytometry](#)
- [Cell Culture](#)

IQGAP1 Antibody - Images



Western blot analysis of IQGAP1 expression in HeLa cell lysate.