

BOB1 Antibody
Rabbit mAb
Catalog # AP91574

Specification

BOB1 Antibody - Product Information

Application	WB, IHC, IP
Primary Accession	Q16633
Clonality	Monoclonal
Other Names	
BOB 1; BOB-1; OBF 1; OBF1; OCA B; OCA-B; OCAB; OCT binding factor 1; Pou2af1;	

Isotype	Rabbit IgG
Host	Rabbit
Calculated MW	27436 Da

BOB1 Antibody - Additional Information

Purification	Affinity-chromatography
Immunogen	A synthesized peptide derived from human BOB1
Description	Transcriptional coactivator that specifically associates with either OCT1 or OCT2. It boosts the OCT1 mediated promoter activity and to a lesser extent, that of OCT2. It has no intrinsic DNA-binding activity. It recognizes the POU domains of OCT1 and OCT2. It is essential for the response of B-cells to antigens and required for the formation of germinal centers.
Storage Condition and Buffer	Rabbit IgG in phosphate buffered saline , pH 7.4, 150mM NaCl, 0.02% sodium azide and 50% glycerol. Store at +4°C short term. Store at -20°C long term. Avoid freeze / thaw cycle.

BOB1 Antibody - Protein Information

Name POU2AF1 ([HGNC:9211](#))

Function

Transcriptional coactivator that specifically associates with either POU2F1/OCT1 or POU2F2/OCT2 (PubMed:7859290). It boosts the POU2F1/OCT1 mediated promoter activity and to a lesser extent, that of POU2F2/OCT2 (PubMed:7779176). It recognizes the POU domains of POU2F1/OCT1 and POU2F2/OCT2 (PubMed:7779176). It is essential for the response of B-cells to antigens and required for the formation of germinal centers

(PubMed:7623806,
PubMed:7859290).
Regulates IL6 expression in B cells as POU2F2/OCT2 coactivator (By similarity).

Cellular Location

Nucleus.

Tissue Location

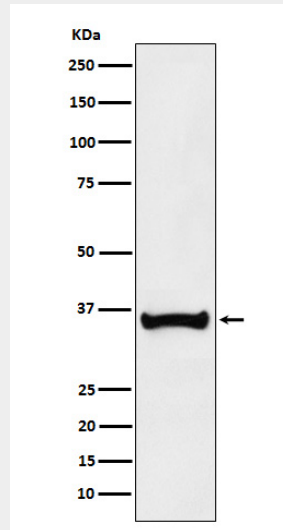
B-cell specific (PubMed:7779176, PubMed:7859290). Detected in mainly in spleen, but also in thymus, peripheral blood leukocyte and small intestine (PubMed:7779176, PubMed:7859290)

BOB1 Antibody - Protocols

Provided below are standard protocols that you may find useful for product applications.

- [Western Blot](#)
- [Blocking Peptides](#)
- [Dot Blot](#)
- [Immunohistochemistry](#)
- [Immunofluorescence](#)
- [Immunoprecipitation](#)
- [Flow Cytometry](#)
- [Cell Culture](#)

BOB1 Antibody - Images



Western blot analysis of BOB1 expression in Ramos cell lysate.