

alpha 1 Antichymotrypsin Antibody
Rabbit mAb
Catalog # AP91570

Specification

alpha 1 Antichymotrypsin Antibody - Product Information

Application	WB, IHC, ICC, IP
Primary Accession	P01011
Clonality	Monoclonal
Other Names	
SERPINA3; AACT; ACT; Antichymotrypsin; GIG24; GIG25; Serpin A3; SERPINA3;	
Isotype	Rabbit IgG
Host	Rabbit
Calculated MW	47651 Da

alpha 1 Antichymotrypsin Antibody - Additional Information

Purification	Affinity-chromatography
Immunogen	A synthesized peptide derived from human alpha 1 Antichymotrypsin
Description	Although its physiological function is unclear, it can inhibit neutrophil cathepsin G and mast cell chymase, both of which can convert angiotensin-1 to the active angiotensin-2.
Storage Condition and Buffer	Rabbit IgG in phosphate buffered saline , pH 7.4, 150mM NaCl, 0.02% sodium azide and 50% glycerol. Store at +4°C short term. Store at -20°C long term. Avoid freeze / thaw cycle.

alpha 1 Antichymotrypsin Antibody - Protein Information

Name SERPINA3

Synonyms AACT

Function

Although its physiological function is unclear, it can inhibit neutrophil cathepsin G and mast cell chymase, both of which can convert angiotensin-1 to the active angiotensin-2.

Cellular Location

Secreted.

Tissue Location

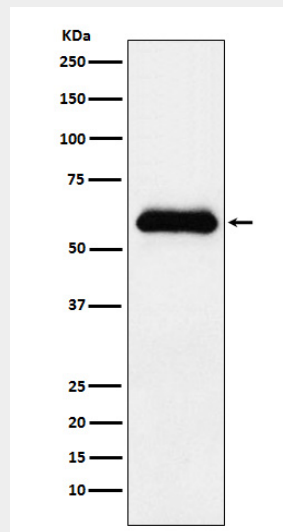
Plasma. Synthesized in the liver. Like the related alpha-1-antitrypsin, its concentration increases in the acute phase of inflammation or infection. Found in the amyloid plaques from the hippocampus of Alzheimer disease brains.

alpha 1 Antichymotrypsin Antibody - Protocols

Provided below are standard protocols that you may find useful for product applications.

- [Western Blot](#)
- [Blocking Peptides](#)
- [Dot Blot](#)
- [Immunohistochemistry](#)
- [Immunofluorescence](#)
- [Immunoprecipitation](#)
- [Flow Cytometry](#)
- [Cell Culture](#)

alpha 1 Antichymotrypsin Antibody - Images



Western blot analysis of alpha 1 Antichymotrypsin expression in human plasma lysate.