

**Aspartate Aminotransferase Antibody**  
Rabbit mAb  
Catalog # AP91566**Specification****Aspartate Aminotransferase Antibody - Product Information**

Application	WB, IHC, FC, ICC
Primary Accession	<a href="#">P17174</a>
Reactivity	Rat
Clonality	Monoclonal

**Other Names**

Aspartate aminotransferase 1; ASTQTL1; cAspAT; cCAT; GIG18; Glutamate oxaloacetate transaminase 1; GOT1; Growth inhibiting protein 18; SGOT; Transaminase A;

Isotype	Rabbit IgG
Host	Rabbit
Calculated MW	46248 Da

**Aspartate Aminotransferase Antibody - Additional Information**

Purification	Affinity-chromatography
Immunogen	A synthesized peptide derived from human Aspartate Aminotransferase
Description	Plays a key role in amino acid metabolism.
Storage Condition and Buffer	Rabbit IgG in phosphate buffered saline , pH 7.4, 150mM NaCl, 0.02% sodium azide and 50% glycerol. Store at +4°C short term. Store at -20°C long term. Avoid freeze / thaw cycle.

**Aspartate Aminotransferase Antibody - Protein Information**

Name GOT1 ([HGNC:4432](#))

**Function**

Biosynthesis of L-glutamate from L-aspartate or L-cysteine (PubMed:<a href="http://www.uniprot.org/citations/21900944" target="\_blank">21900944</a>). Important regulator of levels of glutamate, the major excitatory neurotransmitter of the vertebrate central nervous system. Acts as a scavenger of glutamate in brain neuroprotection. The aspartate aminotransferase activity is involved in hepatic glucose synthesis during development and in adipocyte glyceroneogenesis. Using L-cysteine as substrate, regulates levels of mercaptopyruvate, an important source of hydrogen sulfide. Mercaptopyruvate is converted into H(2)S via the action of 3-mercaptopyruvate sulfurtransferase (3MST). Hydrogen sulfide is an important synaptic modulator and neuroprotectant in the brain. In addition, catalyzes (2S)-2- aminobutanoate, a by-product in the cysteine biosynthesis pathway (PubMed:<a href="http://www.uniprot.org/citations/27827456" target="\_blank">27827456</a>).

**Cellular Location**

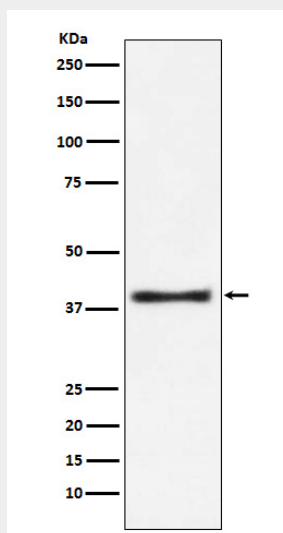
Cytoplasm.

## Aspartate Aminotransferase Antibody - Protocols

Provided below are standard protocols that you may find useful for product applications.

- [Western Blot](#)
- [Blocking Peptides](#)
- [Dot Blot](#)
- [Immunohistochemistry](#)
- [Immunofluorescence](#)
- [Immunoprecipitation](#)
- [Flow Cytometry](#)
- [Cell Culture](#)

## Aspartate Aminotransferase Antibody - Images



Western blot analysis of Aspartate Aminotransferase expression in MCF7 cell lysate.