

**ROC1 Antibody**  
Rabbit mAb  
Catalog # AP91551

## Specification

---

### ROC1 Antibody - Product Information

Application	WB, IHC, FC, ICC, IP
Primary Accession	<a href="#">P62877</a>
Reactivity	Rat
Clonality	Monoclonal
<b>Other Names</b>	
BA554C12.1; MGC13357; MGC1481; RNF75; ROC1;	
Isotype	Rabbit IgG
Host	Rabbit
Calculated MW	12274 Da

### ROC1 Antibody - Additional Information

Purification	Affinity-chromatography
Immunogen	A synthesized peptide derived from human ROC1
Description	E3 ubiquitin ligase component of multiple cullin-RING-based E3 ubiquitin-protein ligase complexes which mediate the ubiquitination and subsequent proteasomal degradation of target proteins, including proteins involved in cell cycle progression, signal transduction, transcription and transcription-coupled nucleotide excision repair.
Storage Condition and Buffer	Rabbit IgG in phosphate buffered saline , pH 7.4, 150mM NaCl, 0.02% sodium azide and 50% glycerol. Store at +4°C short term. Store at -20°C long term. Avoid freeze / thaw cycle.

### ROC1 Antibody - Protein Information

Name RBX1 ([HGNC:9928](#))

#### Function

E3 ubiquitin ligase component of multiple cullin-RING-based E3 ubiquitin-protein ligase (CRLs) complexes which mediate the ubiquitination and subsequent proteasomal degradation of target proteins, including proteins involved in cell cycle progression, signal transduction, transcription and transcription-coupled nucleotide excision repair (PubMed: [10230407](http://www.uniprot.org/citations/10230407), PubMed: [10579999](http://www.uniprot.org/citations/10579999), PubMed: [11961546](http://www.uniprot.org/citations/11961546), PubMed: [11961546](http://www.uniprot.org/citations/11961546)).

[15983046](http://www.uniprot.org/citations/15983046), PubMed:<[16678110](http://www.uniprot.org/citations/16678110)>, PubMed:<[19112177](http://www.uniprot.org/citations/19112177)>, PubMed:<[19679664](http://www.uniprot.org/citations/19679664)>, PubMed:<[22748924](http://www.uniprot.org/citations/22748924)>, PubMed:<[23455478](http://www.uniprot.org/citations/23455478)>, PubMed:<[27565346](http://www.uniprot.org/citations/27565346)>, PubMed:<[29769719](http://www.uniprot.org/citations/29769719)>, PubMed:<[33417871](http://www.uniprot.org/citations/33417871)>). CRLs complexes and ARIH1 collaborate in tandem to mediate ubiquitination of target proteins, ARIH1 mediating addition of the first ubiquitin on CRLs targets (PubMed:<[27565346](http://www.uniprot.org/citations/27565346)>). The functional specificity of the E3 ubiquitin-protein ligase complexes depends on the variable substrate recognition components. As a component of the CSA complex promotes the ubiquitination of ERCC6 resulting in proteasomal degradation. Core component of the Cul7-RING(FBXW8) ubiquitin ligase complex, which mediates the ubiquitination and subsequent proteasomal degradation of target proteins (PubMed:<[35982156](http://www.uniprot.org/citations/35982156)>). Recruits the E2 ubiquitin-conjugating enzyme CDC34 to the complex and brings it into close proximity to the substrate. Probably also stimulates CDC34 autoubiquitination. May be required for histone H3 and histone H4 ubiquitination in response to ultraviolet and for subsequent DNA repair. Promotes the neddylation of CUL1, CUL2, CUL4 and CUL4 via its interaction with UBE2M. Involved in the ubiquitination of KEAP1, ENC1 and KLHL41. In concert with ATF2 and CUL3, promotes degradation of KAT5 thereby attenuating its ability to acetylate and activate ATM. As part of a multisubunit complex composed of elongin BC complex (ELOB and ELOC), elongin A/ELOA, RBX1 and CUL5; polyubiquitinates monoubiquitinated POLR2A (PubMed:<[19920177](http://www.uniprot.org/citations/19920177)>).

#### Cellular Location

Cytoplasm. Nucleus

#### Tissue Location

Widely expressed.

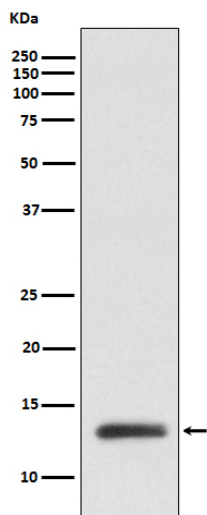
### ROC1 Antibody - Protocols

Provided below are standard protocols that you may find useful for product applications.

- [Western Blot](#)
- [Blocking Peptides](#)
- [Dot Blot](#)
- [Immunohistochemistry](#)
- [Immunofluorescence](#)
- [Immunoprecipitation](#)
- [Flow Cytometry](#)
- [Cell Culture](#)

### ROC1 Antibody - Images





Western blot analysis of ROC1 expression in MCF7 cell lysate.