

RAP80 Antibody
Rabbit mAb
Catalog # AP91550

Specification

RAP80 Antibody - Product Information

Application	WB, IHC, ICC
Primary Accession	O96RL1
Clonality	Monoclonal
Other Names	
BRCA1-A complex subunit RAP80; RAP80; Receptor associated protein 80; RIP110; Rxrip110; UIMC1; X2HRIP110;	
Isotype	Rabbit IgG
Host	Rabbit
Calculated MW	79727 Da

RAP80 Antibody - Additional Information

Purification	Affinity-chromatography
Immunogen	A synthesized peptide derived from human RAP80
Description	Ubiquitin-binding protein that specifically recognizes and binds 'Lys-63'-linked ubiquitin. Plays a central role in the BRCA1-A complex by specifically binding 'Lys-63'-linked ubiquitinated histones H2A and H2AX at DNA lesions sites, leading to target the BRCA1-BARD1 heterodimer to sites of DNA damage at double-strand breaks (DSBs).
Storage Condition and Buffer	Rabbit IgG in phosphate buffered saline , pH 7.4, 150mM NaCl, 0.02% sodium azide and 50% glycerol. Store at +4°C short term. Store at -20°C long term. Avoid freeze / thaw cycle.

RAP80 Antibody - Protein Information

Name UIMC1

Synonyms RAP80, RXRIP110

Function

Ubiquitin-binding protein (PubMed:24627472). Specifically recognizes and binds 'Lys-63'-linked ubiquitin (PubMed:19328070, Ref.38). Plays a central role in the BRCA1-A complex by specifically binding 'Lys-63'-linked ubiquitinated histones H2A and H2AX at DNA lesions sites, leading to target the BRCA1-BARD1

heterodimer to sites of DNA damage at double-strand breaks (DSBs). The BRCA1-A complex also possesses deubiquitinase activity that specifically removes 'Lys-63'-linked ubiquitin on histones H2A and H2AX. Also weakly binds monoubiquitin but with much less affinity than 'Lys-63'-linked ubiquitin. May interact with monoubiquitinated histones H2A and H2B; the relevance of such results is however unclear in vivo. Does not bind Lys-48'-linked ubiquitin. May indirectly act as a transcriptional repressor by inhibiting the interaction of NR6A1 with the corepressor NCOR1.

Cellular Location

Nucleus. Note=Localizes at sites of DNA damage at double-strand breaks (DSBs)

Tissue Location

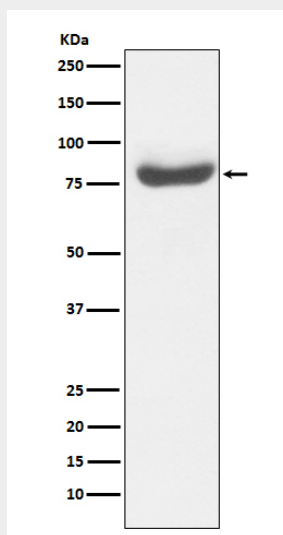
Expressed in testis, ovary, thymus and heart. Expressed in germ cells of the testis.

RAP80 Antibody - Protocols

Provided below are standard protocols that you may find useful for product applications.

- [Western Blot](#)
- [Blocking Peptides](#)
- [Dot Blot](#)
- [Immunohistochemistry](#)
- [Immunofluorescence](#)
- [Immunoprecipitation](#)
- [Flow Cytometry](#)
- [Cell Culture](#)

RAP80 Antibody - Images



Western blot analysis of RAP80 expression in 293T cell lysate.