

**IKB epsilon Antibody**  
Rabbit mAb  
Catalog # AP91548

## Specification

---

### IKB epsilon Antibody - Product Information

Application	WB, IHC, ICC, IP
Primary Accession	<a href="#">O00221</a>
Clonality	Monoclonal
<b>Other Names</b>	
I-kappa-B-epsilon; IkappaBepsilon; IkB-E; IkB-epsilon; IKBE; NF-kappa-B inhibitor epsilon; NF-kappa-BIE; NFKBIE;	
Isotype	Rabbit IgG
Host	Rabbit
Calculated MW	52864 Da

### IKB epsilon Antibody - Additional Information

Purification	Affinity-chromatography
Immunogen	A synthesized peptide derived from human IKB epsilon
Description	Inhibits NF-kappa-B by complexing with and trapping it in the cytoplasm. Inhibits DNA-binding of NF-kappa-B p50-p65 and p50-c-Rel complexes.
Storage Condition and Buffer	Rabbit IgG in phosphate buffered saline , pH 7.4, 150mM NaCl, 0.02% sodium azide and 50% glycerol. Store at +4°C short term. Store at -20°C long term. Avoid freeze / thaw cycle.

### IKB epsilon Antibody - Protein Information

**Name** NFKBIE

**Synonyms** IKBE

#### Function

Inhibits NF-kappa-B by complexing with and trapping it in the cytoplasm. Inhibits DNA-binding of NF-kappa-B p50-p65 and p50-c-Rel complexes.

#### Cellular Location

Cytoplasm.

#### Tissue Location

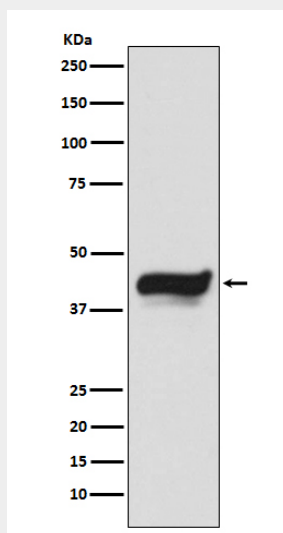
Highly expressed in spleen, testis and lung, followed by kidney, pancreas, heart, placenta and brain. Also expressed in granulocytes and macrophages

## I $\kappa$ B epsilon Antibody - Protocols

Provided below are standard protocols that you may find useful for product applications.

- [Western Blot](#)
- [Blocking Peptides](#)
- [Dot Blot](#)
- [Immunohistochemistry](#)
- [Immunofluorescence](#)
- [Immunoprecipitation](#)
- [Flow Cytometry](#)
- [Cell Culture](#)

## I $\kappa$ B epsilon Antibody - Images



Western blot analysis of I $\kappa$ B epsilon expression in HeLa cell lysate.