

TRPM8 Antibody
Rabbit mAb
Catalog # AP91541**Specification**

TRPM8 Antibody - Product Information

Application	WB, ICC
Primary Accession	O7Z2W7
Clonality	Monoclonal
Other Names	
LTrpC6; MGC2849; Transient receptor potential p8; Trp p8; Trpm8; TRPP8;	
Isotype	Rabbit IgG
Host	Rabbit
Calculated MW	127685 Da

TRPM8 Antibody - Additional Information

Purification	Affinity-chromatography
Immunogen	A synthesized peptide derived from human TRPM8
Description	Activated by icilin, eucalyptol, menthol, cold and modulation of intracellular pH. Involved in menthol sensation. Permeable for monovalent cations sodium, potassium, and cesium and divalent cation calcium.
Storage Condition and Buffer	Rabbit IgG in phosphate buffered saline , pH 7.4, 150mM NaCl, 0.02% sodium azide and 50% glycerol. Store at +4°C short term. Store at -20°C long term. Avoid freeze / thaw cycle.

TRPM8 Antibody - Protein Information**Name** TRPM8**Synonyms** LTRPC6, TRPP8**Function**

Non-selective ion channel permeable to monovalent and divalent cations, including Na(+), K(+), and Ca(2+), with higher permeability for Ca(2+). Activated by multiple factors, such as temperature, voltage, pressure, and changes in osmolality. Activated by cool temperatures (<23-28 degrees Celsius) and by chemical ligands evoking a sensation of coolness, such as menthol and icilin therefore plays a central role in the detection of environmental cold temperatures (PubMed: [15306801](http://www.uniprot.org/citations/15306801) target="_blank">15306801, PubMed: [15852009](http://www.uniprot.org/citations/15852009) target="_blank">15852009, PubMed: [16174775](http://www.uniprot.org/citations/16174775) target="_blank">16174775, PubMed: [25559186](http://www.uniprot.org/citations/25559186) target="_blank">25559186, PubMed: [37857704](http://www.uniprot.org/citations/37857704) target="_blank">37857704)

target="_blank">37857704). TRPM8 is a voltage-dependent channel; its activation by cold or chemical ligands shifts its voltage thresholds towards physiological membrane potentials, leading to the opening of the channel (PubMed:15306801). In addition to its critical role in temperature sensing, regulates basal tear secretion by sensing evaporation-induced cooling and changes in osmolality (By similarity). May plays a role in prostate cancer cell migration (PubMed:16174775, PubMed:25559186).

Cellular Location

Cell membrane; Multi-pass membrane protein. Membrane raft {ECO:0000250|UniProtKB:Q8R4D5}. Endoplasmic reticulum membrane. Note=Lipid raft association modulates TRPM8 channel activity (By similarity) Located in the endoplasmic reticulum in prostate cancer cells (PubMed:11325849, PubMed:16174775). {ECO:0000250|UniProtKB:Q8R4D5, ECO:0000269|PubMed:11325849, ECO:0000269|PubMed:16174775}

Tissue Location

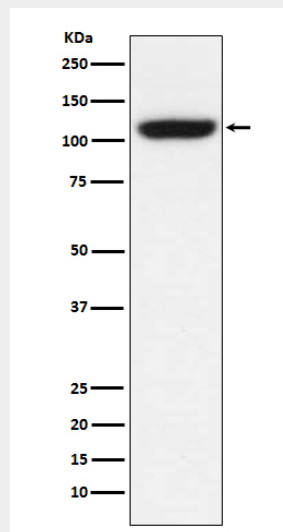
Expressed in prostate. Also expressed in prostate tumors and in non-prostatic primary tumors such as colon, lung, breast and skin tumors.

TRPM8 Antibody - Protocols

Provided below are standard protocols that you may find useful for product applications.

- [Western Blot](#)
- [Blocking Peptides](#)
- [Dot Blot](#)
- [Immunohistochemistry](#)
- [Immunofluorescence](#)
- [Immunoprecipitation](#)
- [Flow Cytometry](#)
- [Cell Culture](#)

TRPM8 Antibody - Images



Western blot analysis of TRPM8 expression in A549 cell lysate.