

UQCRC2 Antibody
Rabbit mAb
Catalog # AP91539

Specification

UQCRC2 Antibody - Product Information

Application	WB, IHC, FC, ICC, IP
Primary Accession	P22695
Reactivity	Rat
Clonality	Monoclonal
Other Names	
Core protein II; QCR2; mitochondrial; Ubiquinol cytochrome c reductase core protein II; UQCR2; Uqcrc2;	
Isotype	Rabbit IgG
Host	Rabbit
Calculated MW	48443 Da

UQCRC2 Antibody - Additional Information

Purification	Affinity-chromatography
Immunogen	A synthesized peptide derived from human UQCRC2
Description	This is a component of the ubiquinol-cytochrome c reductase complex (complex III or cytochrome b-c1 complex), which is part of the mitochondrial respiratory chain. The core protein 2 is required for the assembly of the complex. Rabbit IgG in phosphate buffered saline , pH 7.4, 150mM NaCl, 0.02% sodium azide and 50% glycerol. Store at +4°C short term. Store at -20°C long term. Avoid freeze / thaw cycle.
Storage Condition and Buffer	

UQCRC2 Antibody - Protein Information

Name UQCRC2

Function

Component of the ubiquinol-cytochrome c oxidoreductase, a multisubunit transmembrane complex that is part of the mitochondrial electron transport chain which drives oxidative phosphorylation. The respiratory chain contains 3 multisubunit complexes succinate dehydrogenase (complex II, CII), ubiquinol-cytochrome c oxidoreductase (cytochrome b-c1 complex, complex III, CIII) and cytochrome c oxidase (complex IV, CIV), that cooperate to transfer electrons derived from NADH and succinate to molecular oxygen, creating an electrochemical gradient over the inner membrane that drives transmembrane transport and the ATP synthase. The cytochrome b-c1 complex catalyzes electron transfer from ubiquinol to cytochrome c, linking this redox reaction to translocation of protons across the mitochondrial inner membrane, with

protons being carried across the membrane as hydrogens on the quinol. In the process called Q cycle, 2 protons are consumed from the matrix, 4 protons are released into the intermembrane space and 2 electrons are passed to cytochrome c (By similarity). The 2 core subunits UQCRC1/QCR1 and UQCRC2/QCR2 are homologous to the 2 mitochondrial-processing peptidase (MPP) subunits beta-MPP and alpha-MPP respectively, and they seem to have preserved their MPP processing properties (By similarity). May be involved in the in situ processing of UQCRFS1 into the mature Rieske protein and its mitochondrial targeting sequence (MTS)/subunit 9 when incorporated into complex III (Probable).

Cellular Location

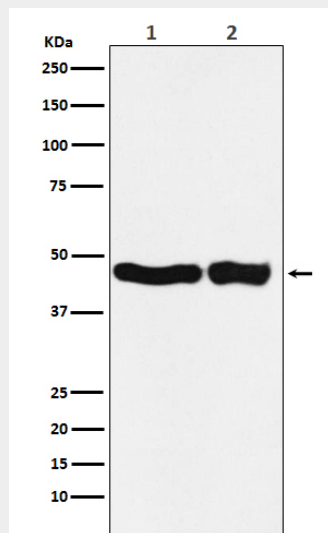
Mitochondrion inner membrane {ECO:0000250|UniProtKB:P07257}; Peripheral membrane protein {ECO:0000250|UniProtKB:P07257}; Matrix side {ECO:0000250|UniProtKB:P07257}

UQCRC2 Antibody - Protocols

Provided below are standard protocols that you may find useful for product applications.

- [Western Blot](#)
- [Blocking Peptides](#)
- [Dot Blot](#)
- [Immunohistochemistry](#)
- [Immunofluorescence](#)
- [Immunoprecipitation](#)
- [Flow Cytometry](#)
- [Cell Culture](#)

UQCRC2 Antibody - Images



Western blot analysis of UQCRC2 expression in (1) HEK293 cell lysate; (2) Mouse kidney lysate.