

Thymidylate Synthase Antibody
Rabbit mAb
Catalog # AP91518**Specification****Thymidylate Synthase Antibody - Product Information**

Application	WB, IHC, FC, ICC, IP
Primary Accession	P04818
Reactivity	Rat
Clonality	Monoclonal

Other Names

dTMP synthase; HsT422; Thymidylate synthase; TMS; TS; TSase; Tyms; TYMS protein; Tyms thymidylate synthetase;

Isotype	Rabbit IgG
Host	Rabbit
Calculated MW	35716 Da

Thymidylate Synthase Antibody - Additional Information

Purification	Affinity-chromatography
Immunogen	A synthesized peptide derived from human Thymidylate Synthase
Description	Contributes to the de novo mitochondrial thymidylate biosynthesis pathway.
Storage Condition and Buffer	Rabbit IgG in phosphate buffered saline , pH 7.4, 150mM NaCl, 0.02% sodium azide and 50% glycerol. Store at +4°C short term. Store at -20°C long term. Avoid freeze / thaw cycle.

Thymidylate Synthase Antibody - Protein Information

Name TYMS ([HGNC:12441](#))

Synonyms TS

Function

Catalyzes the reductive methylation of 2'-deoxyuridine 5'- monophosphate (dUMP) to thymidine 5'-monophosphate (dTMP), using the cosubstrate, 5,10- methylenetetrahydrofolate (CH₂H₄folate) as a 1- carbon donor and reductant and contributes to the de novo mitochondrial thymidylate biosynthesis pathway.

Cellular Location

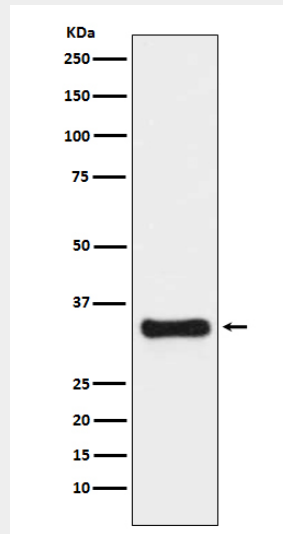
Nucleus. Cytoplasm. Mitochondrion. Mitochondrion matrix. Mitochondrion inner membrane

Thymidylate Synthase Antibody - Protocols

Provided below are standard protocols that you may find useful for product applications.

- [Western Blot](#)
- [Blocking Peptides](#)
- [Dot Blot](#)
- [Immunohistochemistry](#)
- [Immunofluorescence](#)
- [Immunoprecipitation](#)
- [Flow Cytometry](#)
- [Cell Culture](#)

Thymidylate Synthase Antibody - Images



Western blot analysis of Thymidylate Synthase expression in HeLa cell lysate.