

ETS1 Antibody
Rabbit mAb
Catalog # AP91517

Specification

ETS1 Antibody - Product Information

Application	WB, FC
Primary Accession	P14921
Clonality	Monoclonal
Other Names	
C ets 1 protein; ETS 1; ETS1; ETS1 oncogene; EWSR2; Oncogene ETS1; P54; Protein C-ets-1;	

Isotype	Rabbit IgG
Host	Rabbit
Calculated MW	50408 Da

ETS1 Antibody - Additional Information

Purification	Affinity-chromatography
Immunogen	A synthesized peptide derived from human ETS1
Description	Transcription factor.
Storage Condition and Buffer	Rabbit IgG in phosphate buffered saline , pH 7.4, 150mM NaCl, 0.02% sodium azide and 50% glycerol. Store at +4°C short term. Store at -20°C long term. Avoid freeze / thaw cycle.

ETS1 Antibody - Protein Information

Name ETS1

Synonyms EWSR2

Function

Transcription factor (PubMed:10698492, PubMed:11909962). Directly controls the expression of cytokine and chemokine genes in a wide variety of different cellular contexts (PubMed:20378371). May control the differentiation, survival and proliferation of lymphoid cells (PubMed:20378371). May also regulate angiogenesis through regulation of expression of genes controlling endothelial cell migration and invasion (PubMed:15247905, PubMed:15592518).

Cellular Location

Nucleus. Cytoplasm Note=Delocalizes from nucleus to cytoplasm when coexpressed with isoform

Ets-1 p27.

Tissue Location

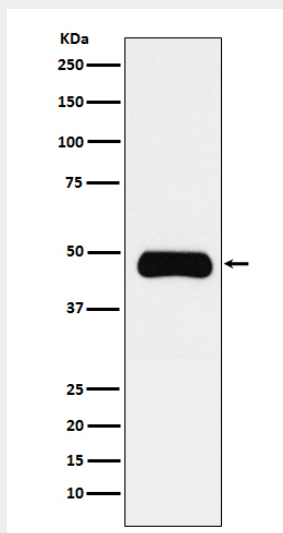
Highly expressed within lymphoid cells. Isoforms c- ETS-1A and Ets-1 p27 are both detected in all fetal tissues tested, but vary with tissue type in adult tissues. None is detected in brain or kidney.

ETS1 Antibody - Protocols

Provided below are standard protocols that you may find useful for product applications.

- [Western Blot](#)
- [Blocking Peptides](#)
- [Dot Blot](#)
- [Immunohistochemistry](#)
- [Immunofluorescence](#)
- [Immunoprecipitation](#)
- [Flow Cytometry](#)
- [Cell Culture](#)

ETS1 Antibody - Images



Western blot analysis of Insulin Receptor R expression in Daudi cell lysate.