

**Insulin Receptor R Antibody**  
Rabbit mAb  
Catalog # AP91516

**Specification**

---

**Insulin Receptor R Antibody - Product Information**

Application	WB, IHC
Primary Accession	<a href="#">P14616</a>
Reactivity	Rat
Clonality	Monoclonal
<b>Other Names</b>	
INSRR; Insulin receptor related receptor precursor; IR related receptor; IRR; SIRR;	
Isotype	Rabbit IgG
Host	Rabbit
Calculated MW	143720 Da

**Insulin Receptor R Antibody - Additional Information**

Purification	Affinity-chromatography
Immunogen	A synthesized peptide derived from human Insulin Receptor R
Description	This receptor probably binds an insulin related protein and has a tyrosine-protein kinase activity. It phosphorylates the insulin receptor substrates IRS-1 and IRS-2.
Storage Condition and Buffer	Rabbit IgG in phosphate buffered saline , pH 7.4, 150mM NaCl, 0.02% sodium azide and 50% glycerol. Store at +4°C short term. Store at -20°C long term. Avoid freeze / thaw cycle.

**Insulin Receptor R Antibody - Protein Information**

**Name** INSRR

**Synonyms** IRR

**Function**

Receptor with tyrosine-protein kinase activity. Functions as a pH sensing receptor which is activated by increased extracellular pH. Activates an intracellular signaling pathway that involves IRS1 and AKT1/PKB.

**Cellular Location**

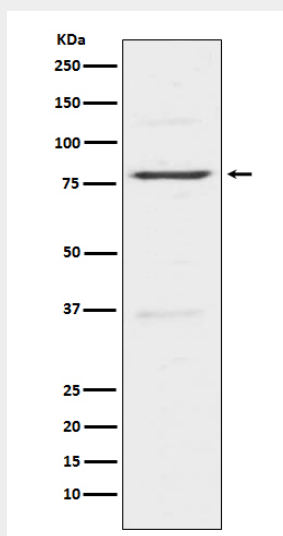
Membrane; Single-pass type I membrane protein.

## Insulin Receptor R Antibody - Protocols

Provided below are standard protocols that you may find useful for product applications.

- [Western Blot](#)
- [Blocking Peptides](#)
- [Dot Blot](#)
- [Immunohistochemistry](#)
- [Immunofluorescence](#)
- [Immunoprecipitation](#)
- [Flow Cytometry](#)
- [Cell Culture](#)

## Insulin Receptor R Antibody - Images



Western blot analysis of Insulin Receptor R expression in HeLa cell lysate.