

Placental alkaline phosphatase (PLAP) Antibody
Rabbit mAb
Catalog # AP91509

Specification

Placental alkaline phosphatase (PLAP) Antibody - Product Information

Application **WB, IHC, ICC**
Primary Accession **[P05187](#)**
Clonality **Monoclonal**

Other Names

Alkaline phosphatase, placental type; Alkaline phosphatase Regan isozyme; Placental alkaline phosphatase 1; PLAP-1; ALPP; PLAP;

Isotype **Rabbit IgG**
Host **Rabbit**
Calculated MW **57954 Da**

Placental alkaline phosphatase (PLAP) Antibody - Additional Information

Purification **Affinity-chromatography**
Immunogen **A synthesized peptide derived from human Placental alkaline phosphatase (PLAP)**
Description **PLAP may assist in guiding migratory cells and transporting specific molecules, such as fatty acids and immunoglobulins, across the plasma membrane. The three tissue-specific APs identified in human, PLAP, germ cell AP (GCAP) and intestinal AP, are 90-98% homologous and their genes are clustered on chromosome 2q.**
Storage Condition and Buffer **Rabbit IgG in phosphate buffered saline , pH 7.4, 150mM NaCl, 0.02% sodium azide and 50% glycerol. Store at +4°C short term. Store at -20°C long term. Avoid freeze / thaw cycle.**

Placental alkaline phosphatase (PLAP) Antibody - Protein Information

Name ALPP ([HGNC:439](#))

Function

Alkaline phosphatase that can hydrolyze various phosphate compounds.

Cellular Location

Cell membrane; Lipid-anchor, GPI-anchor

Tissue Location

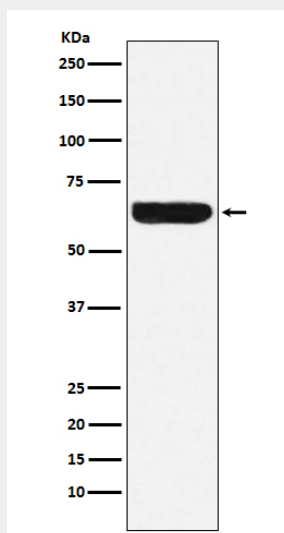
Detected in placenta (at protein level).

Placental alkaline phosphatase (PLAP) Antibody - Protocols

Provided below are standard protocols that you may find useful for product applications.

- [Western Blot](#)
- [Blocking Peptides](#)
- [Dot Blot](#)
- [Immunohistochemistry](#)
- [Immunofluorescence](#)
- [Immunoprecipitation](#)
- [Flow Cytometry](#)
- [Cell Culture](#)

Placental alkaline phosphatase (PLAP) Antibody - Images



Western blot analysis of Placental alkaline phosphatase (PLAP) expression in HeLa cell lysate.