

**NDUFS3 Antibody**  
Rabbit mAb  
Catalog # AP91498

## Specification

---

### NDUFS3 Antibody - Product Information

Application	WB, IHC, ICC, IP
Primary Accession	<a href="#">O75489</a>
Reactivity	Rat
Clonality	Monoclonal

#### Other Names

CI 30KD; Complex I 30KD; COMPLEX I, MITOCHONDRIAL RESPIRATORY CHAIN, 30-KD SUBUNIT; Complex I-30kD; mitochondrial; NADH coenzyme Q reductase; NDUFS3;

Isotype	Rabbit IgG
Host	Rabbit
Calculated MW	30242 Da

### NDUFS3 Antibody - Additional Information

Purification	Affinity-chromatography
Immunogen	A synthesized peptide derived from human NDUFS3
Description	Core subunit of the mitochondrial membrane respiratory chain NADH dehydrogenase (Complex I) that is believed to belong to the minimal assembly required for catalysis. Complex I functions in the transfer of electrons from NADH to the respiratory chain. The immediate electron acceptor for the enzyme is believed to be ubiquinone.
Storage Condition and Buffer	Rabbit IgG in phosphate buffered saline , pH 7.4, 150mM NaCl, 0.02% sodium azide and 50% glycerol. Store at +4°C short term. Store at -20°C long term. Avoid freeze / thaw cycle.

### NDUFS3 Antibody - Protein Information

**Name** NDUFS3

#### Function

Core subunit of the mitochondrial membrane respiratory chain NADH dehydrogenase (Complex I) which catalyzes electron transfer from NADH through the respiratory chain, using ubiquinone as an electron acceptor (PubMed: [14729820](http://www.uniprot.org/citations/14729820), PubMed: [30140060](http://www.uniprot.org/citations/30140060)). Essential for the catalytic activity and assembly of complex I (PubMed: [14729820](http://www.uniprot.org/citations/14729820)).

PubMed: <a href="http://www.uniprot.org/citations/24028823" target="\_blank">24028823</a>,  
PubMed: <a href="http://www.uniprot.org/citations/30140060" target="\_blank">30140060</a>).

### Cellular Location

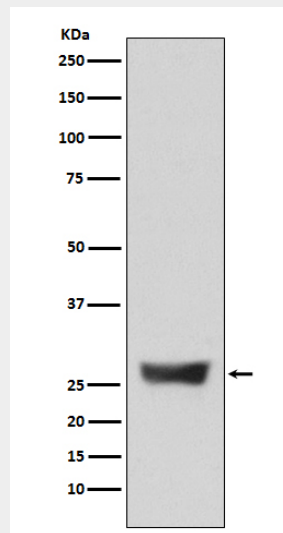
Mitochondrion inner membrane; Peripheral membrane protein; Matrix side

### NDUFS3 Antibody - Protocols

Provided below are standard protocols that you may find useful for product applications.

- [Western Blot](#)
- [Blocking Peptides](#)
- [Dot Blot](#)
- [Immunohistochemistry](#)
- [Immunofluorescence](#)
- [Immunoprecipitation](#)
- [Flow Cytometry](#)
- [Cell Culture](#)

### NDUFS3 Antibody - Images



Western blot analysis of NDUFS3 expression in 293T cell lysate.