

HRIHFB2025 Antibody (C-term)
Affinity Purified Rabbit Polyclonal Antibody (Pab)
Catalog # AP9148B

Specification

HRIHFB2025 Antibody (C-term) - Product Information

Application	WB, IHC-P, FC,E
Primary Accession	O9Y3M2
Reactivity	Human
Host	Rabbit
Clonality	Polyclonal
Isotype	Rabbit IgG
Antigen Region	98-126

HRIHFB2025 Antibody (C-term) - Additional Information

Gene ID 25776

Other Names

Protein chibby homolog 1, ARPP-binding protein, Cytosolic leucine-rich protein, PIGEA-14, PKD2 interactor, Golgi and endoplasmic reticulum-associated 1, CBY1, ARB1, C22orf2, CBY, PGEA1

Target/Specificity

This HRIHFB2025 antibody is generated from rabbits immunized with a KLH conjugated synthetic peptide between 98-126 amino acids from the C-terminal region of human HRIHFB2025.

Dilution

WB~~1:1000
IHC-P~~1:50~100
FC~~1:10~50

Format

Purified polyclonal antibody supplied in PBS with 0.09% (W/V) sodium azide. This antibody is purified through a protein A column, followed by peptide affinity purification.

Storage

Maintain refrigerated at 2-8°C for up to 2 weeks. For long term storage store at -20°C in small aliquots to prevent freeze-thaw cycles.

Precautions

HRIHFB2025 Antibody (C-term) is for research use only and not for use in diagnostic or therapeutic procedures.

HRIHFB2025 Antibody (C-term) - Protein Information

Name CBY1

Synonyms ARB1, C22orf2, CBY, PGEA1

Function Inhibits the Wnt/Wingless pathway by binding to CTNNB1/beta- catenin and inhibiting beta-catenin-mediated transcriptional activation through competition with TCF/LEF transcription factors. Has also been shown to play a role in regulating the intracellular trafficking of polycystin-2/PKD2 and possibly of other intracellular proteins. Promotes adipocyte and cardiomyocyte differentiation.

Cellular Location

Nucleus speckle. Cytoplasm, cytoskeleton, cilium basal body. Cytoplasm, cytoskeleton, microtubule organizing center, centrosome, centriole. Golgi apparatus. Golgi apparatus, trans-Golgi network

Tissue Location

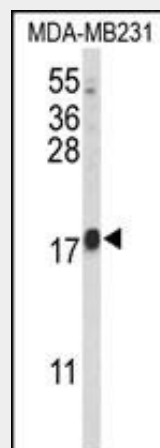
Widely expressed. Expressed at higher levels in heart, skeletal muscle, kidney and placenta. Also found in brain, lung, liver and testis. Significantly down-regulated in thyroid and metastatic uterine tumors.

HRIHFB2025 Antibody (C-term) - Protocols

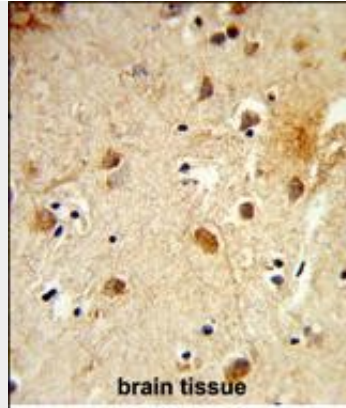
Provided below are standard protocols that you may find useful for product applications.

- [Western Blot](#)
- [Blocking Peptides](#)
- [Dot Blot](#)
- [Immunohistochemistry](#)
- [Immunofluorescence](#)
- [Immunoprecipitation](#)
- [Flow Cytometry](#)
- [Cell Culture](#)

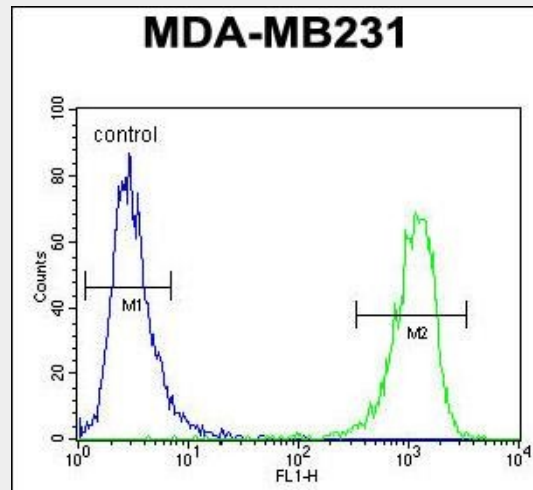
HRIHFB2025 Antibody (C-term) - Images



Western blot analysis of HRIHFB2025 Antibody (C-term) (Cat. #AP9148b) in MDA-MB231 cell line lysates (35ug/lane). HRIHFB2025 (arrow) was detected using the purified Pab.



Formalin-fixed and paraffin-embedded human brain tissue reacted with HRIHFB2025 Antibody (C-term), which was peroxidase-conjugated to the secondary antibody, followed by DAB staining. This data demonstrates the use of this antibody for immunohistochemistry; clinical relevance has not been evaluated.



HRIHFB2025 Antibody (C-term) (Cat. #AP9148b) flow cytometric analysis of MDA-MB231 cells (right histogram) compared to a negative control cell (left histogram). FITC-conjugated goat-anti-rabbit secondary antibodies were used for the analysis.

HRIHFB2025 Antibody (C-term) - Background

Inhibits the Wnt/Wingless pathway by binding to beta catenin and inhibiting beta catenin mediated transcriptional activation by competing with TCF/LEF transcription factors. Has also been shown to play a role in regulating the intracellular trafficking of polycystin 2/PKD2 and possibly of other intracellular proteins.

HRIHFB2025 Antibody (C-term) - References

Gauci S., et.al., Anal. Chem. 81:4493-4501(2009).

HRIHFB2025 Antibody (C-term) - Citations

- [Combined Chibby and \$\beta\$ -Catenin Predicts Clinical Outcomes in Patients with Hepatocellular Carcinoma](#)
- [Identification of cisplatin-resistance related genes in head and neck squamous cell carcinoma.](#)