

CCR8 Antibody
Rabbit mAb
Catalog # AP91487

Specification

CCR8 Antibody - Product Information

| | |
|---|------------------------|
| Application | WB, ICC |
| Primary Accession | P51685 |
| Reactivity | Rat |
| Clonality | Monoclonal |
| Other Names | |
| CY6; TER1; CCR-8; CKRL1; CDw198; CMKBR8; GPRCY6; CMKBRL2; CC-CKR-8; TER1; | |
| Isotype | Rabbit IgG |
| Host | Rabbit |
| Calculated MW | 40844 Da |

CCR8 Antibody - Additional Information

| | |
|------------------------------|---|
| Purification | Affinity-chromatography |
| Immunogen | A synthesized peptide derived from human CCR8 |
| Description | Receptor for the chemokine CCL1/SCYA1/I-309. May regulate monocyte chemotaxis and thymic cell line apoptosis. Alternative coreceptor with CD4 for HIV-1 infection. |
| Storage Condition and Buffer | Rabbit IgG in phosphate buffered saline , pH 7.4, 150mM NaCl, 0.02% sodium azide and 50% glycerol. Store at +4°C short term. Store at -20°C long term. Avoid freeze / thaw cycle. |

CCR8 Antibody - Protein Information

Name CCR8

Synonyms CKRL1, CMKBR8, CMKBRL2

Function

Receptor for the chemokine CCL1/SCYA1/I-309. May regulate monocyte chemotaxis and thymic cell line apoptosis. Alternative coreceptor with CD4 for HIV-1 infection.

Cellular Location

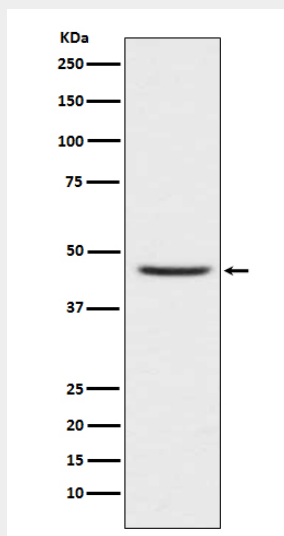
Cell membrane; Multi-pass membrane protein.

CCR8 Antibody - Protocols

Provided below are standard protocols that you may find useful for product applications.

- [Western Blot](#)
- [Blocking Peptides](#)
- [Dot Blot](#)
- [Immunohistochemistry](#)
- [Immunofluorescence](#)
- [Immunoprecipitation](#)
- [Flow Cytometry](#)
- [Cell Culture](#)

CCR8 Antibody - Images



Western blot analysis of CCR8 expression in Jurkat cell lysate.