

**GABARAP Antibody**  
Rabbit mAb  
Catalog # AP91484

## Specification

---

### GABARAP Antibody - Product Information

Application	WB, IHC, FC, ICC
Primary Accession	<a href="#">O95166</a>
Reactivity	Rat
Clonality	Monoclonal
<b>Other Names</b>	
GABARAP; GABARAPL1; GABARAPL2;	
Isotype	Rabbit IgG
Host	Rabbit
Calculated MW	13918 Da

### GABARAP Antibody - Additional Information

Purification	Affinity-chromatography
Immunogen	A synthesized peptide derived from human GABARAP
Description	GABARAP is cleaved at its carboxyl terminus, which leads to conjugation by either of the phospholipids phosphatidylethanolamine or phosphatidylserine. This processing converts GABARAP from a type I to a type II membrane bound form involved in autophagosome biogenesis. Processing of GABARAP involves cleavage by Atg4 family members followed by conjugation by the E1 and E2 like enzymes Atg7 and Atg3.
Storage Condition and Buffer	Rabbit IgG in phosphate buffered saline , pH 7.4, 150mM NaCl, 0.02% sodium azide and 50% glycerol. Store at +4°C short term. Store at -20°C long term. Avoid freeze / thaw cycle.

### GABARAP Antibody - Protein Information

Name GABARAP ([HGNC:4067](#))

Synonyms FLC3B

#### Function

Ubiquitin-like modifier that plays a role in intracellular transport of GABA(A) receptors and its interaction with the cytoskeleton (PubMed: <http://www.uniprot.org/citations/9892355> target="\_blank">9892355</a>). Involved in autophagy: while LC3s are involved in elongation of

the phagophore membrane, the GABARAP/GATE-16 subfamily is essential for a later stage in autophagosome maturation (PubMed:<a href="http://www.uniprot.org/citations/15169837" target="\_blank">15169837</a>, PubMed:<a href="http://www.uniprot.org/citations/20562859" target="\_blank">20562859</a>, PubMed:<a href="http://www.uniprot.org/citations/22948227" target="\_blank">22948227</a>). Through its interaction with the reticulophagy receptor TEX264, participates in the remodeling of subdomains of the endoplasmic reticulum into autophagosomes upon nutrient stress, which then fuse with lysosomes for endoplasmic reticulum turnover (PubMed:<a href="http://www.uniprot.org/citations/31006538" target="\_blank">31006538</a>). Also required for the local activation of the CUL3(KBTBD6/7) E3 ubiquitin ligase complex, regulating ubiquitination and degradation of TIAM1, a guanyl-nucleotide exchange factor (GEF) that activates RAC1 and downstream signal transduction (PubMed:<a href="http://www.uniprot.org/citations/25684205" target="\_blank">25684205</a>). Thereby, regulates different biological processes including the organization of the cytoskeleton, cell migration and proliferation (PubMed:<a href="http://www.uniprot.org/citations/25684205" target="\_blank">25684205</a>). Involved in apoptosis (PubMed:<a href="http://www.uniprot.org/citations/15977068" target="\_blank">15977068</a>).

### Cellular Location

Cytoplasmic vesicle, autophagosome membrane. Endomembrane system {ECO:0000250|UniProtKB:P60517}. Cytoplasm, cytoskeleton {ECO:0000250|UniProtKB:P60517}. Golgi apparatus membrane {ECO:0000250|UniProtKB:P60517}. Cytoplasmic vesicle {ECO:0000250|UniProtKB:P60517}. Note=Largely associated with intracellular membrane structures including the Golgi apparatus and postsynaptic cisternae. Colocalizes with microtubules (By similarity) Localizes also to discrete punctae along the ciliary axoneme (By similarity). {ECO:0000250|UniProtKB:P60517, ECO:0000250|UniProtKB:Q9DCD6}

### Tissue Location

Heart, brain, placenta, liver, skeletal muscle, kidney and pancreas.

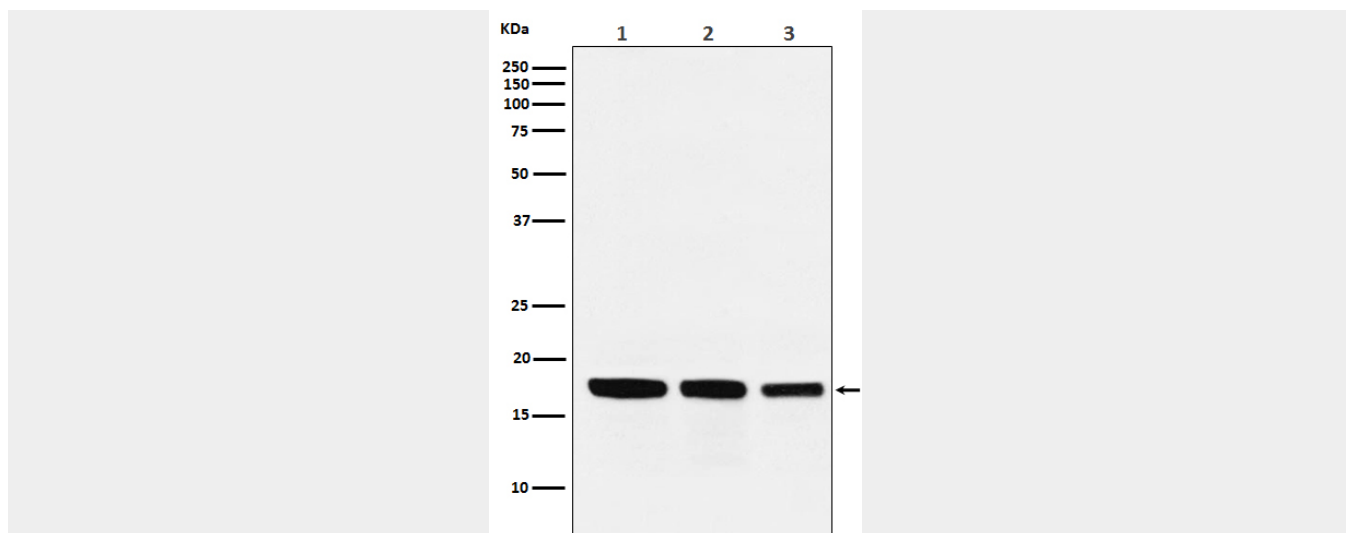
### GABARAP Antibody - Protocols

Provided below are standard protocols that you may find useful for product applications.

- [Western Blot](#)
- [Blocking Peptides](#)
- [Dot Blot](#)
- [Immunohistochemistry](#)
- [Immunofluorescence](#)
- [Immunoprecipitation](#)
- [Flow Cytometry](#)
- [Cell Culture](#)

### GABARAP Antibody - Images





Western blot analysis of GABARAP expression in (1) HepG2 cell lysate; (2) Mouse kidney lysate; (3) Rat heart lysate.