

Eg5 Antibody
Rabbit mAb
Catalog # AP91468

Specification

Eg5 Antibody - Product Information

Application **WB, ICC, IP**
Primary Accession [P52732](#)
Clonality **Monoclonal**

Other Names

EG5; HKSP; Kinesin family member 11; Kinesin like protein 1; Kinesin-like protein KIF11; KNSL1; MCLMR; TR-interacting protein 5; TRIP5;

Isotype **Rabbit IgG**
Host **Rabbit**
Calculated MW **119159 Da**

Eg5 Antibody - Additional Information

Purification **Affinity-chromatography**
Immunogen **A synthesized peptide derived from human Eg5**
Description **Motor protein required for establishing a bipolar spindle. Blocking of KIF11 prevents centrosome migration and arrest cells in mitosis with monoastal microtubule arrays.**
Storage Condition and Buffer **Rabbit IgG in phosphate buffered saline , pH 7.4, 150mM NaCl, 0.02% sodium azide and 50% glycerol. Store at +4°C short term. Store at -20°C long term. Avoid freeze / thaw cycle.**

Eg5 Antibody - Protein Information

Name KIF11

Synonyms EG5, KNSL1, TRIP5

Function

Motor protein required for establishing a bipolar spindle and thus contributing to chromosome congression during mitosis (PubMed: [19001501](http://www.uniprot.org/citations/19001501), PubMed: [37728657](http://www.uniprot.org/citations/37728657)). Required in non-mitotic cells for transport of secretory proteins from the Golgi complex to the cell surface (PubMed: [23857769](http://www.uniprot.org/citations/23857769)).

Cellular Location

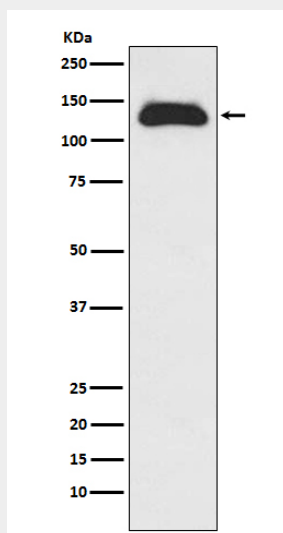
Cytoplasm. Cytoplasm, cytoskeleton, spindle pole

Eg5 Antibody - Protocols

Provided below are standard protocols that you may find useful for product applications.

- [Western Blot](#)
- [Blocking Peptides](#)
- [Dot Blot](#)
- [Immunohistochemistry](#)
- [Immunofluorescence](#)
- [Immunoprecipitation](#)
- [Flow Cytometry](#)
- [Cell Culture](#)

Eg5 Antibody - Images



Western blot analysis of Eg5 expression in Raji cell lysate.