

**Cyclophilin F Antibody**  
**Rabbit mAb**  
**Catalog # AP91459****Specification**

---

**Cyclophilin F Antibody - Product Information**

Application	<b>WB, IHC, IP</b>
Primary Accession	<a href="#">P30405</a>
Reactivity	<b>Rat</b>
Clonality	<b>Monoclonal</b>

**Other Names**

Cyclophilin 3; cyclophilin D; Cyclophilin F; Cyp D; CyP M; CYP3; CypD; hCyP3; Mitochondrial cyclophilin; PPlase; PPlase F; Ppif; Rotamase;

Isotype	<b>Rabbit IgG</b>
Host	<b>Rabbit</b>
Calculated MW	<b>22040 Da</b>

**Cyclophilin F Antibody - Additional Information**

Purification	<b>Affinity-chromatography</b>
Immunogen	<b>A synthesized peptide derived from human Cyclophilin F</b>
Description	<b>PPIases accelerate the folding of proteins. It catalyzes the cis-trans isomerization of proline imidic peptide bonds in oligopeptides.</b>
Storage Condition and Buffer	<b>Rabbit IgG in phosphate buffered saline , pH 7.4, 150mM NaCl, 0.02% sodium azide and 50% glycerol. Store at +4°C short term. Store at -20°C long term. Avoid freeze / thaw cycle.</b>

**Cyclophilin F Antibody - Protein Information****Name** PPIF**Synonyms** CYP3**Function**

PPIase that catalyzes the cis-trans isomerization of proline imidic peptide bonds in oligopeptides and may therefore assist protein folding (PubMed:[20676357](http://www.uniprot.org/citations/20676357)). Involved in regulation of the mitochondrial permeability transition pore (mPTP) (PubMed:[26387735](http://www.uniprot.org/citations/26387735)). It is proposed that its association with the mPTP is masking a binding site for inhibiting inorganic phosphate (Pi) and promotes the open probability of the mPTP leading to apoptosis or necrosis; the requirement of the PPIase activity for this function is debated (PubMed:[26387735](http://www.uniprot.org/citations/26387735)). In

cooperation with mitochondrial p53/TP53 is involved in activating oxidative stress-induced necrosis (PubMed:<a href="http://www.uniprot.org/citations/22726440" target="\_blank">22726440</a>). Involved in modulation of mitochondrial membrane F(1)F(0) ATP synthase activity and regulation of mitochondrial matrix adenine nucleotide levels (By similarity). Has anti-apoptotic activity independently of mPTP and in cooperation with BCL2 inhibits cytochrome c-dependent apoptosis (PubMed:<a href="http://www.uniprot.org/citations/19228691" target="\_blank">19228691</a>).

#### Cellular Location

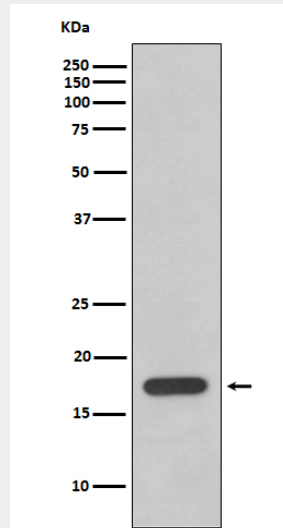
Mitochondrion matrix

### Cyclophilin F Antibody - Protocols

Provided below are standard protocols that you may find useful for product applications.

- [Western Blot](#)
- [Blocking Peptides](#)
- [Dot Blot](#)
- [Immunohistochemistry](#)
- [Immunofluorescence](#)
- [Immunoprecipitation](#)
- [Flow Cytometry](#)
- [Cell Culture](#)

### Cyclophilin F Antibody - Images



Western blot analysis of Cyclophilin F expression in HeLa cell lysate.