

BCHE Antibody
Rabbit mAb
Catalog # AP91451

Specification

BCHE Antibody - Product Information

Application	WB
Primary Accession	P06276
Clonality	Monoclonal
Other Names	
BCHE; Butyrylcholine esterase; CHE1; CHE2; Choline esterase II; Cholinesterase (serum) 2; Cholinesterase 1; Cholinesterase; E1;	
Isotype	Rabbit IgG
Host	Rabbit
Calculated MW	68418 Da

BCHE Antibody - Additional Information

Purification	Affinity-chromatography
Immunogen	A synthesized peptide derived from human BCHE
Description	Esterase with broad substrate specificity. Contributes to the inactivation of the neurotransmitter acetylcholine. Can degrade neurotoxic organophosphate esters.
Storage Condition and Buffer	Rabbit IgG in phosphate buffered saline , pH 7.4, 150mM NaCl, 0.02% sodium azide and 50% glycerol. Store at +4°C short term. Store at -20°C long term. Avoid freeze / thaw cycle.

BCHE Antibody - Protein Information

Name BCHE

Synonyms CHE1

Function

Esterase with broad substrate specificity. Contributes to the inactivation of the neurotransmitter acetylcholine. Can degrade neurotoxic organophosphate esters.

Cellular Location

Secreted

Tissue Location

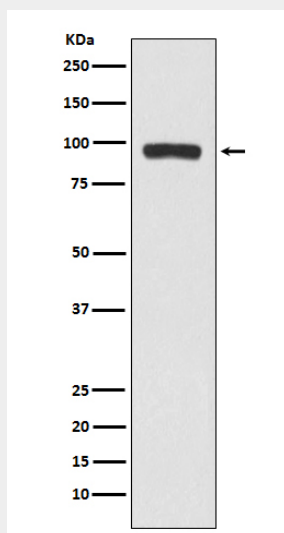
Detected in blood plasma (at protein level). Present in most cells except erythrocytes

BCHE Antibody - Protocols

Provided below are standard protocols that you may find useful for product applications.

- [Western Blot](#)
- [Blocking Peptides](#)
- [Dot Blot](#)
- [Immunohistochemistry](#)
- [Immunofluorescence](#)
- [Immunoprecipitation](#)
- [Flow Cytometry](#)
- [Cell Culture](#)

BCHE Antibody - Images



Western blot analysis of BCHE expression in A375 cell lysate.