

**CD55 Antibody**  
Rabbit mAb  
Catalog # AP91439

## Specification

---

### CD55 Antibody - Product Information

Application	WB, IHC
Primary Accession	<a href="#">P08174</a>
Clonality	Monoclonal
<b>Other Names</b>	
Cd55a; Complement decay accelerating factor; CROM; DAF; Daf-GPI; Daf1; GPI-DAF;	

Isotype	Rabbit IgG
Host	Rabbit
Calculated MW	41400 Da

### CD55 Antibody - Additional Information

Purification	Affinity-chromatography
Immunogen	A synthesized peptide derived from human CD55
Description	This protein recognizes C4b and C3b fragments that condense with cell-surface hydroxyl or amino groups when nascent C4b and C3b are locally generated during C4 and c3 activation. Interaction of daf with cell-associated C4b and C3b polypeptides interferes with their ability to catalyze the conversion of C2 and factor B to enzymatically active C2a and Bb and thereby prevents the formation of C4b2a and C3bBb, the amplification convertases of the complement cascade.
Storage Condition and Buffer	Rabbit IgG in phosphate buffered saline , pH 7.4, 150mM NaCl, 0.02% sodium azide and 50% glycerol. Store at +4°C short term. Store at -20°C long term. Avoid freeze / thaw cycle.

### CD55 Antibody - Protein Information

**Name** CD55

**Synonyms** CR, DAF

#### Function

This protein recognizes C4b and C3b fragments that condense with cell-surface hydroxyl or amino groups when nascent C4b and C3b are locally generated during C4 and c3 activation. Interaction of daf with cell-associated C4b and C3b polypeptides interferes with their ability to catalyze the

conversion of C2 and factor B to enzymatically active C2a and Bb and thereby prevents the formation of C4b2a and C3bBb, the amplification convertases of the complement cascade (PubMed:<a href="http://www.uniprot.org/citations/7525274" target="\_blank">7525274</a>). Inhibits complement activation by destabilizing and preventing the formation of C3 and C5 convertases, which prevents complement damage (PubMed:<a href="http://www.uniprot.org/citations/28657829" target="\_blank">28657829</a>).

#### Cellular Location

[Isoform 1]: Cell membrane; Single-pass type I membrane protein [Isoform 3]: Secreted [Isoform 5]: Secreted [Isoform 7]: Cell membrane; Lipid-anchor, GPI-anchor

#### Tissue Location

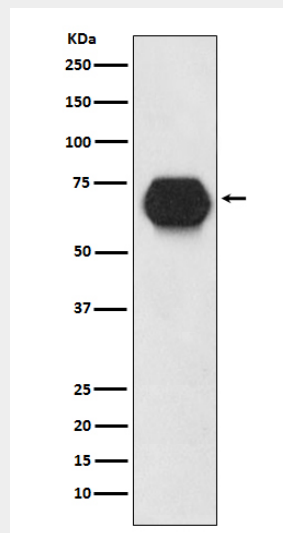
Expressed on the plasma membranes of all cell types that are in intimate contact with plasma complement proteins. It is also found on the surfaces of epithelial cells lining extracellular compartments, and variants of the molecule are present in body fluids and in extracellular matrix

### CD55 Antibody - Protocols

Provided below are standard protocols that you may find useful for product applications.

- [Western Blot](#)
- [Blocking Peptides](#)
- [Dot Blot](#)
- [Immunohistochemistry](#)
- [Immunofluorescence](#)
- [Immunoprecipitation](#)
- [Flow Cytometry](#)
- [Cell Culture](#)

### CD55 Antibody - Images



Western blot analysis of CD55 expression in A549 cell lysate.