

SNAP23 Antibody
Rabbit mAb
Catalog # AP91437

Specification

SNAP23 Antibody - Product Information

Application	WB
Primary Accession	O00161
Reactivity	Rat
Clonality	Monoclonal

Other Names

HsT17016; LS-B8340; SNAP23A; SNAP23B; Synaptosomal associated protein 23; Vesicle membrane fusion protein SNAP23;

Isotype	Rabbit IgG
Host	Rabbit
Calculated MW	23354 Da

SNAP23 Antibody - Additional Information

Purification	Affinity-chromatography
Immunogen	A synthesized peptide derived from human SNAP23
Description	Essential component of the high affinity receptor for the general membrane fusion machinery and an important regulator of transport vesicle docking and fusion.
Storage Condition and Buffer	Rabbit IgG in phosphate buffered saline , pH 7.4, 150mM NaCl, 0.02% sodium azide and 50% glycerol. Store at +4°C short term. Store at -20°C long term. Avoid freeze / thaw cycle.

SNAP23 Antibody - Protein Information

Name SNAP23

Function

Essential component of the high affinity receptor for the general membrane fusion machinery and an important regulator of transport vesicle docking and fusion.

Cellular Location

Cell membrane; Peripheral membrane protein. Cell membrane; Lipid-anchor. Synapse, synaptosome. Note=Mainly localized to the plasma membrane

Tissue Location

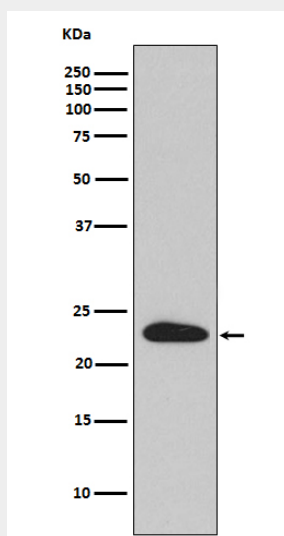
Ubiquitous. Highest levels where found in placenta.

SNAP23 Antibody - Protocols

Provided below are standard protocols that you may find useful for product applications.

- [Western Blot](#)
- [Blocking Peptides](#)
- [Dot Blot](#)
- [Immunohistochemistry](#)
- [Immunofluorescence](#)
- [Immunoprecipitation](#)
- [Flow Cytometry](#)
- [Cell Culture](#)

SNAP23 Antibody - Images



Western blot analysis of SNAP23 expression in HeLa cell lysate.