

**IDH2 Antibody**  
Rabbit mAb  
Catalog # AP91435

## Specification

---

### IDH2 Antibody - Product Information

Application	WB, IHC, FC
Primary Accession	<a href="#">P48735</a>
Reactivity	Rat
Clonality	Monoclonal
<b>Other Names</b>	
D2HGA2; ICD-M; IDH; IDH2; IDHM; IDP; IDPM; mNADP-IDH; NADP(+)-specific ICDH; Oxalosuccinate decarboxylase;	
Isotype	Rabbit IgG
Host	Rabbit
Calculated MW	50909 Da

### IDH2 Antibody - Additional Information

Purification	Affinity-chromatography
Immunogen	A synthesized peptide derived from human IDH2
Description	Plays a role in intermediary metabolism and energy production. It may tightly associate or interact with the pyruvate dehydrogenase complex.
Storage Condition and Buffer	Rabbit IgG in phosphate buffered saline , pH 7.4, 150mM NaCl, 0.02% sodium azide and 50% glycerol. Store at +4°C short term. Store at -20°C long term. Avoid freeze / thaw cycle.

### IDH2 Antibody - Protein Information

**Name** IDH2

#### Function

Plays a role in intermediary metabolism and energy production (PubMed:<a href="http://www.uniprot.org/citations/19228619" target="\_blank">19228619</a>, PubMed:<a href="http://www.uniprot.org/citations/22416140" target="\_blank">22416140</a>). It may tightly associate or interact with the pyruvate dehydrogenase complex (PubMed:<a href="http://www.uniprot.org/citations/19228619" target="\_blank">19228619</a>, PubMed:<a href="http://www.uniprot.org/citations/22416140" target="\_blank">22416140</a>).

#### Cellular Location

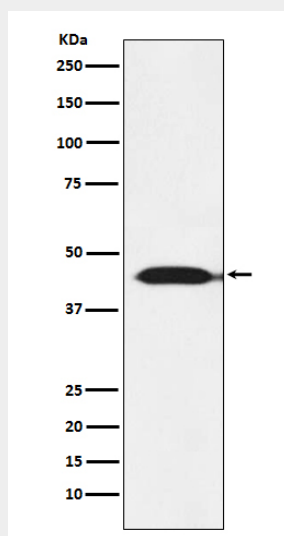
Mitochondrion {ECO:0000250|UniProtKB:P33198}.

## IDH2 Antibody - Protocols

Provided below are standard protocols that you may find useful for product applications.

- [Western Blot](#)
- [Blocking Peptides](#)
- [Dot Blot](#)
- [Immunohistochemistry](#)
- [Immunofluorescence](#)
- [Immunoprecipitation](#)
- [Flow Cytometry](#)
- [Cell Culture](#)

## IDH2 Antibody - Images



Western blot analysis of IDH2 expression in MOLT4 cell lysate.