

**CRMP2 Antibody**  
Rabbit mAb  
Catalog # AP91433

## Specification

---

### CRMP2 Antibody - Product Information

Application	WB, IHC, FC, ICC, IP
Primary Accession	<a href="#">Q16555</a>
Reactivity	Rat
Clonality	Monoclonal
<b>Other Names</b>	
DRP2; CRMP-2; N2A3; Unc-33-like phosphoprotein 2; ULIP-2; DPYSL2; CRMP2; ULIP2; Musunc33; TOAD64;	
Isotype	Rabbit IgG
Host	Rabbit
Calculated MW	62294 Da

### CRMP2 Antibody - Additional Information

Purification	Affinity-chromatography
Immunogen	A synthesized peptide derived from human CRMP2
Description	Necessary for signaling by class 3 semaphorins and subsequent remodeling of the cytoskeleton. Plays a role in axon guidance, neuronal growth cone collapse and cell migration.
Storage Condition and Buffer	Rabbit IgG in phosphate buffered saline , pH 7.4, 150mM NaCl, 0.02% sodium azide and 50% glycerol. Store at +4°C short term. Store at -20°C long term. Avoid freeze / thaw cycle.

### CRMP2 Antibody - Protein Information

**Name** DPYSL2

**Synonyms** CRMP2, ULIP2

#### Function

Plays a role in neuronal development and polarity, as well as in axon growth and guidance, neuronal growth cone collapse and cell migration. Necessary for signaling by class 3 semaphorins and subsequent remodeling of the cytoskeleton. May play a role in endocytosis.

#### Cellular Location

Cytoplasm, cytosol. Cytoplasm, cytoskeleton. Membrane. Note=Tightly but non-covalently associated with membranes

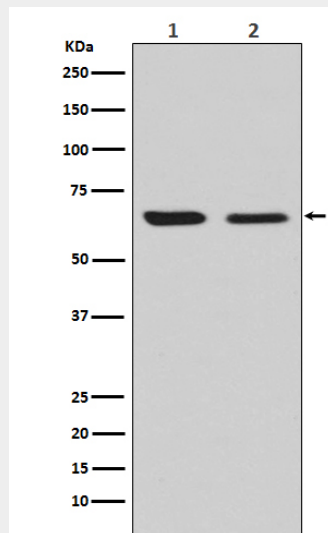
**Tissue Location**

Ubiquitous.

**CRMP2 Antibody - Protocols**

Provided below are standard protocols that you may find useful for product applications.

- [Western Blot](#)
- [Blocking Peptides](#)
- [Dot Blot](#)
- [Immunohistochemistry](#)
- [Immunofluorescence](#)
- [Immunoprecipitation](#)
- [Flow Cytometry](#)
- [Cell Culture](#)

**CRMP2 Antibody - Images**

Western blot analysis of CRMP2 expression in (1) U87-MG cell lysate; (2) NIH/3T3 cell lysate.