

Calpain 2 Antibody
Rabbit mAb
Catalog # AP91423

Specification

Calpain 2 Antibody - Product Information

Application	WB
Primary Accession	P17655
Reactivity	Rat
Clonality	Monoclonal

Other Names

CALP80; Calpain M type; Calpain-2 large subunit; Calpain2; CANP2; CANPL2; CANPml; Capa2; CAPN2; M calpain; mCANP; Millimolar calpain;

Isotype	Rabbit IgG
Host	Rabbit
Calculated MW	79995 Da

Calpain 2 Antibody - Additional Information

Purification	Affinity-chromatography
Immunogen	A synthesized peptide derived from human Calpain 2
Description	Calcium-regulated non-lysosomal thiol-protease which catalyze limited proteolysis of substrates involved in cytoskeletal remodeling and signal transduction.
Storage Condition and Buffer	Rabbit IgG in phosphate buffered saline , pH 7.4, 150mM NaCl, 0.02% sodium azide and 50% glycerol. Store at +4°C short term. Store at -20°C long term. Avoid freeze / thaw cycle.

Calpain 2 Antibody - Protein Information

Name CAPN2

Synonyms CANPL2

Function

Calcium-regulated non-lysosomal thiol-protease which catalyzes limited proteolysis of substrates involved in cytoskeletal remodeling and signal transduction. Proteolytically cleaves MYOC at 'Arg-226' (PubMed: [17650508](http://www.uniprot.org/citations/17650508)). Proteolytically cleaves CPEB3 following neuronal stimulation which abolishes CPEB3 translational repressor activity, leading to translation of CPEB3 target mRNAs (By similarity).

Cellular Location

Cytoplasm. Cell membrane. Note=Translocates to the plasma membrane upon Ca(2+) binding

Tissue Location

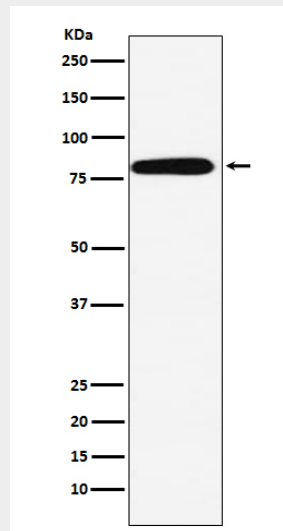
Ubiquitous.

Calpain 2 Antibody - Protocols

Provided below are standard protocols that you may find useful for product applications.

- [Western Blot](#)
- [Blocking Peptides](#)
- [Dot Blot](#)
- [Immunohistochemistry](#)
- [Immunofluorescence](#)
- [Immunoprecipitation](#)
- [Flow Cytometry](#)
- [Cell Culture](#)

Calpain 2 Antibody - Images



Western blot analysis of Calpain 2 expression in A431 cell lysate.