

**CD42b Antibody**  
Rabbit mAb  
Catalog # AP91420

## Specification

---

### CD42b Antibody - Product Information

Application **WB, IHC**  
Primary Accession [P07359](#)  
Clonality **Monoclonal**

#### Other Names

Antigen CD42b alpha; BDPLT1; BDPLT3; BSS; CD42b alpha; DBPLT3; Glycoprotein Ibalpha; GP Ib alpha; GP1B; GP1BA; GPIb alpha; GPIbA; VWDP;

Isotype **Rabbit IgG**  
Host **Rabbit**  
Calculated MW **71540 Da**

### CD42b Antibody - Additional Information

Purification **Affinity-chromatography**  
Immunogen **A synthesized peptide derived from human CD42b**  
Description **CD42b is a platelet activation marker involved in the process of coagulation as an aggregating factor. It interacts with extracellular matrix as well as with adhesion molecules. Its expression and activation seems to be regulated by VEGF and PDGF.**  
Storage Condition and Buffer **Rabbit IgG in phosphate buffered saline , pH 7.4, 150mM NaCl, 0.02% sodium azide and 50% glycerol. Store at +4°C short term. Store at -20°C long term. Avoid freeze / thaw cycle.**

### CD42b Antibody - Protein Information

**Name** GP1BA

#### Function

GP-Ib, a surface membrane protein of platelets, participates in the formation of platelet plugs by binding to the A1 domain of vWF, which is already bound to the subendothelium.

#### Cellular Location

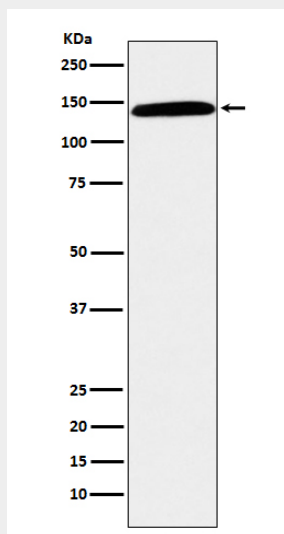
Membrane; Single-pass type I membrane protein.

### CD42b Antibody - Protocols

Provided below are standard protocols that you may find useful for product applications.

- [Western Blot](#)
- [Blocking Peptides](#)
- [Dot Blot](#)
- [Immunohistochemistry](#)
- [Immunofluorescence](#)
- [Immunoprecipitation](#)
- [Flow Cytometry](#)
- [Cell Culture](#)

#### CD42b Antibody - Images



Western blot analysis of CD42b expression in human spleen lysate.