

RBP4 Antibody
Rabbit mAb
Catalog # AP91409

Specification

RBP4 Antibody - Product Information

Application WB, IHC, FC, ICC
Primary Accession [P02753](#)
Clonality Monoclonal
Other Names
PRBP; PRO2222; RBP; RBP4; RDCCAS;

Isotype Rabbit IgG
Host Rabbit
Calculated MW 23010 Da

RBP4 Antibody - Additional Information

Purification Affinity-chromatography
Immunogen A synthesized peptide derived from human RBP4
Description Delivers retinol from the liver stores to the peripheral tissues. In plasma, the RBP-retinol complex interacts with transthyretin, this prevents its loss by filtration through the kidney glomeruli.
Storage Condition and Buffer Rabbit IgG in phosphate buffered saline , pH 7.4, 150mM NaCl, 0.02% sodium azide and 50% glycerol. Store at +4°C short term. Store at -20°C long term. Avoid freeze / thaw cycle.

RBP4 Antibody - Protein Information

Name RBP4

Function

Retinol-binding protein that mediates retinol transport in blood plasma (PubMed: [5541771](http://www.uniprot.org/citations/5541771)). Delivers retinol from the liver stores to the peripheral tissues (Probable). Transfers the bound all-trans retinol to STRA6, that then facilitates retinol transport across the cell membrane (PubMed: [22665496](http://www.uniprot.org/citations/22665496)).

Cellular Location

Secreted

Tissue Location

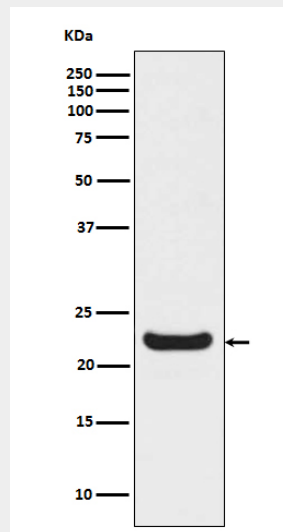
Detected in blood plasma and in urine (at protein level).

RBP4 Antibody - Protocols

Provided below are standard protocols that you may find useful for product applications.

- [Western Blot](#)
- [Blocking Peptides](#)
- [Dot Blot](#)
- [Immunohistochemistry](#)
- [Immunofluorescence](#)
- [Immunoprecipitation](#)
- [Flow Cytometry](#)
- [Cell Culture](#)

RBP4 Antibody - Images



Western blot analysis of RBP4 expression in HepG2 cell lysate.